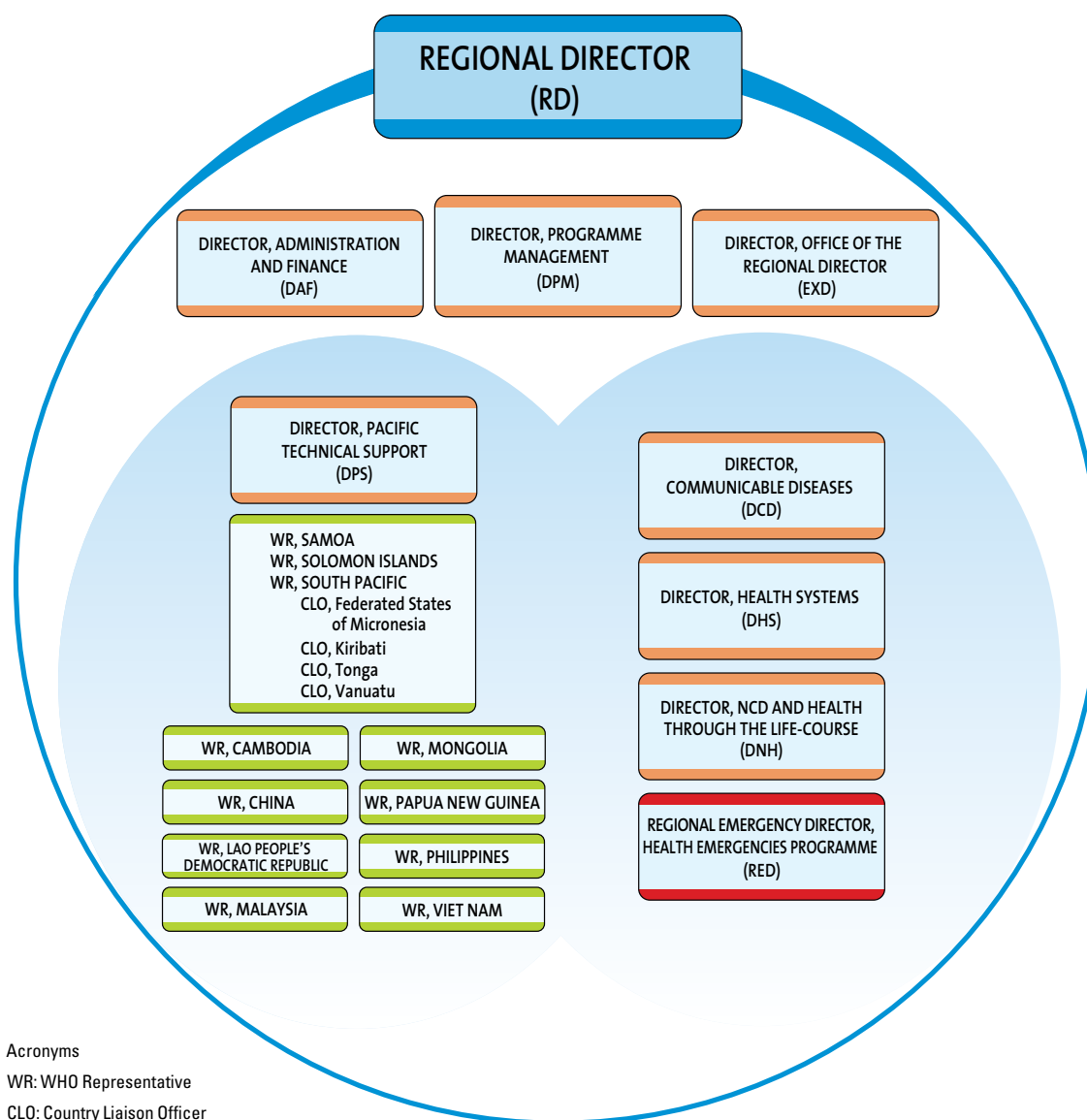


WHO Regional Office for the Western Pacific

Structure to better serve Member States

The structure of divisions in the WHO Regional Office for the Western Pacific is designed to streamline operations and strengthen country-level support under the regional reform agenda.



Acronyms

WR: WHO Representative

CLO: Country Liaison Officer

Divisions and programmes

DIRECTOR	PROGRAMME
Director, Programme Management (DPM)	Programme Development and Operations (PDO) Country Support (CSU) Editorial Services (EDT)
Director, Administration and Finance (DAF)	Budget and Finance (BFU) Human Resources Management (HRM) Information Technologies and Administration (ITA)
Director, Office of the Regional Director (EXD)	External Relations and Partnerships (ERP) <i>Public Information Office (PIO)</i> <i>Information Products and Services (IPS)</i>
Director, Communicable Diseases (DCD)	Expanded Programme on Immunization (EPI) Malaria, other Vectorborne and Parasitic Diseases (MVP) HIV, Hepatitis and Sexually Transmitted Infections (HSI) Stop TB and Leprosy Elimination (STB)
Director, Health Systems (DHS)	Health Policy and Financing (HPF) Integrated Service Delivery (ISD) Essential Medicines and Health Technologies (EMT) Health Intelligence and Innovation (HII) Equity and Social Determinants (ESD)
Director, NCD and Health through the Life-Course (DNH)	Noncommunicable Diseases and Health Promotion (NCD) Tobacco Free Initiative (TFI) Mental Health and Substance Abuse (MHS) Reproductive, Maternal, Newborn, Child and Adolescent Health (MCA) Health and the Environment (HAE) <i>Violence and Injuries (VIP)</i> <i>Disabilities and Rehabilitation (DAR)</i> <i>Nutrition (NUT)</i>
Director, Health Security and Emergencies (DSE)	Emerging Disease Surveillance and Response (ESR) Disaster Risk Management for Health (DRM) Food Safety (FOS)
Director, Pacific Technical Support (DPS)	Health Security and Communicable Diseases (PSC) Health Systems (PHS) NCD and Health through the Life-Course (PNH)
A compliance and risk management officer position has been established and reports directly to the Regional Director.	

Programmes in regular font are led by coordinators (technical areas) and managers (administrative areas).

Programmes in italic font are led by technical leads under the direct authority of their respective director.