



# Federated States of Micronesia

## Country Profile-Measles Elimination

### Demographic information (data for 2013)

	UN World Population Prospects	WHO-UNICEF Joint Reporting Form (JRF)
< 1 year old	2 379	2 372
< 5 years old	11 570	12 042
< 15 years old	36 336	36 650
Total population	103 549	102 624

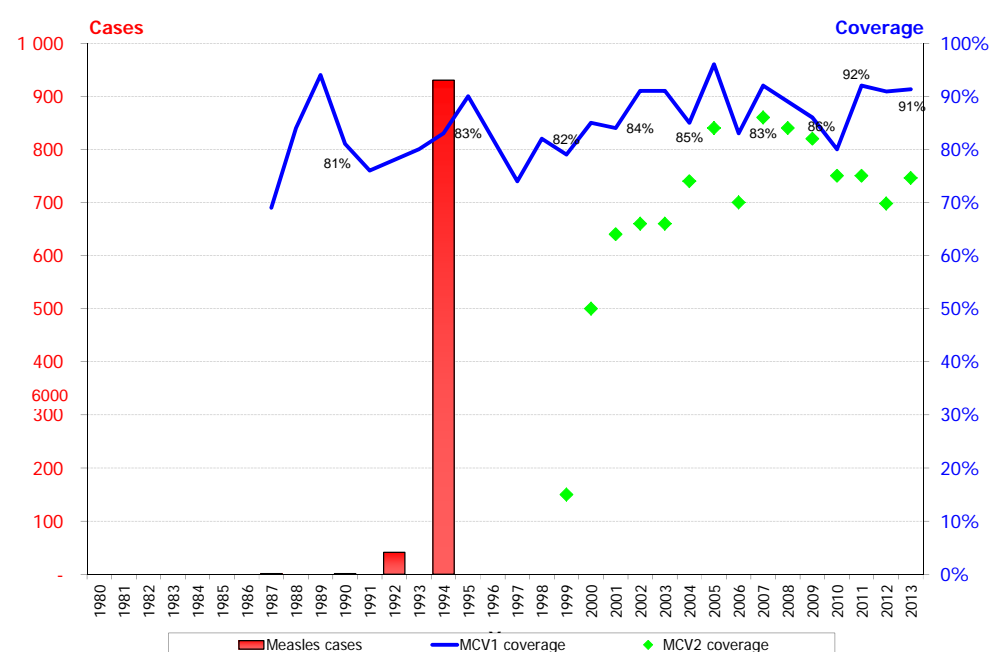


### Measles incidence and epidemiologic characteristic

	Suspected measles cases	Confirmed measles cases				Discarded as non-measles	Pending classification	Deaths due to measles	Measles incidence <sup>1</sup>
		Laboratory	Epi-linked	Clinically	Total				
2010	0	0	0	0	0	0	0	0	0
2011	0	0	0	0	0	0	0	0	0
2012	0	0	0	0	0	0	0	0	0
	Suspected measles cases	Confirmed measles cases			Compatible cases	Discarded as non-measles	Pending classification	Deaths due to measles	Measles incidence <sup>1</sup>
		Laboratory	Epi-linked	Total					
2013	0	0	0	0	0	0	0	0	0
2014 <sup>2</sup>	0	0	0	0	0	0	0	0	0

### Immunity against measles

Measles cases and immunization coverage, 1980–2013



Measles immunization

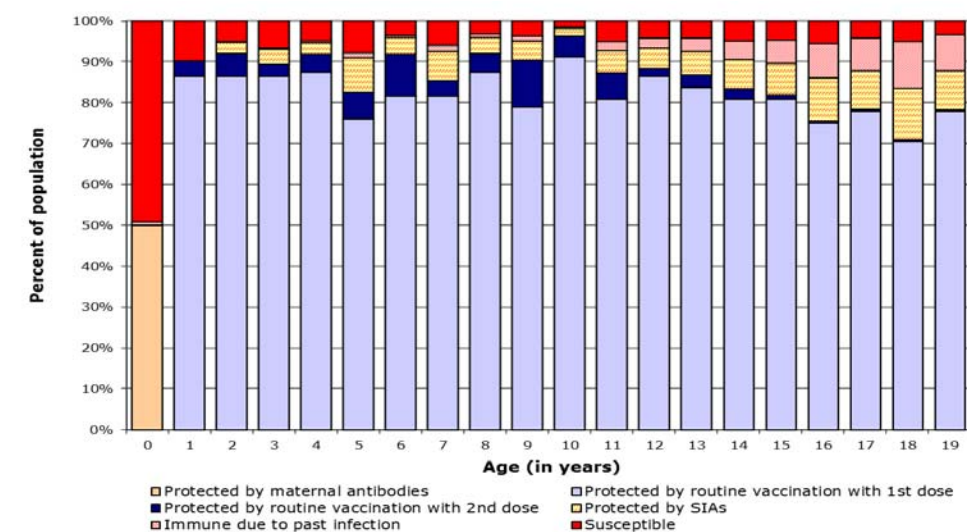
	Year of introduction
Rubella containing vaccine	1982
Measles second dose	1995

	Vaccine type	Schedule	School entry requirement for measles?
MCV1	MMR	12m	Yes
MCV2	MMR	13+m	Yes

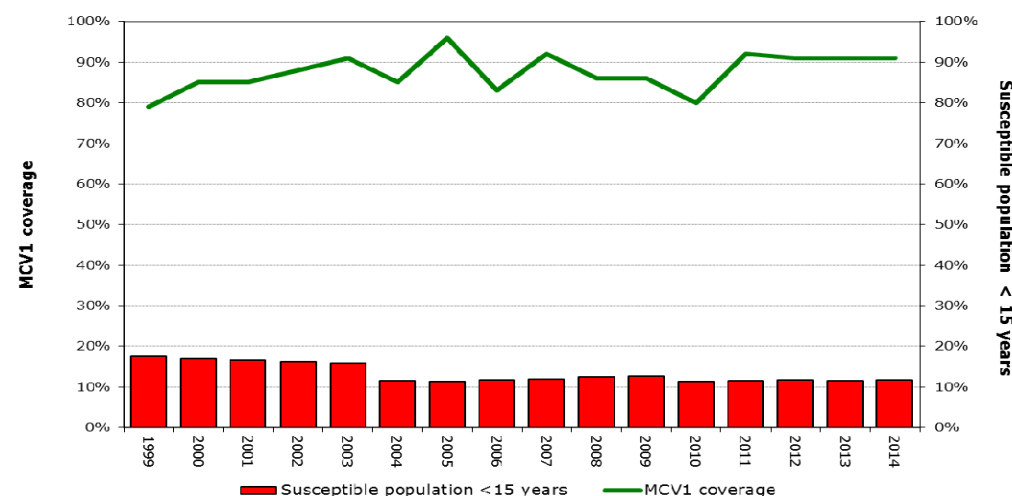
Supplementary immunization activities (SIAs)

Year	Age	Vaccine type	No. vaccinated	Coverage
2004 (Chuuk state)	1-14 yrs		17 847	87%
2010 (Chuuk state)	12-83 mos	M	6145	91%
2011 (Pohnpei state)	12-83 mos	MMR	4889	96%
2013 (Chuuk state)	12-47 mos	MMR	3435	96%

Immunity profile, 2014



Percent of under 15 year population susceptible<sup>1</sup> to measles and MCV1 coverage, 1999-2014



<sup>1</sup> Defined as neither protected by vaccination nor immune due to past infection

### Sustainability

Does country have multi-year plan?	Yes
For what years?	2013-2017
Are measles elimination activities included?	Yes, without line item budget
Does country have annual workplan in 2013?	
Are measles elimination activities included?	
% of expenditure on vaccines used in routine immunization funded by government	2-5%
% of expenditure on routine immunization funded by government	

### Data Sources

- WHO-UNICEF Joint Reporting Forms (JRF) for Immunization
- Measles and rubella monthly country and laboratory reports to WHO – data through September 2014, as of October 2014
- United Nations, Department of Economic and Social Affairs, Population Division (2013). World Population Prospects: The 2012 Revision, CD-ROM Edition. (Medium-fertility variant)
- Measles Strategic Planning (MSP) Tool version 2.0
- Measles Nucleotide Surveillance (MeNS)
- Measles Laboratory Accreditation Checklist
- Country presentations - Measles elimination consultation (April 2012)

Please visit our website:  
[www.wpro.who.int/immunization](http://www.wpro.who.int/immunization)

Please send your questions/comments to:  
[WPR\\_EPIdata@wpro.who.int](mailto:WPR_EPIdata@wpro.who.int)

<sup>1</sup> Per 1 million population

<sup>2</sup> Includes all cases reported to the Western Pacific Regional Office by 20 October 2014, measles incidence is annualized