



French Polynesia, 2014

Population

Total population*	279 835
Births	4200
National Immunization Programme (NIP) target	4200

* United Nations, Department of Economic and Social Affairs, Population Division (2013). World Population Prospects: The 2012 Revision, CD-ROM Edition. (Medium Fertility Variant)

Finance

Gross national income per capita* (US \$)	-
Line item in budget for vaccines	Yes
% of vaccines in routine immunization funded by government	
% of routine immunization - funded by government	
Eligible for GAVI support	No

* World Health Statistics 2015

Immunization schedule

DTP-Hib-IPV	M4	BCG	B
DTP-Hib-HepB-IPV	M2, M10	HepB	B
Pneumo_conj	M2, M3, M4, M10	MMR	M12, M18
Td	Y45, Y65, Y75, Y85	DTP-IPV	Y6
TdaP	Y11, Y25	Pneumo_ps	Y5
IPV	Y11, Y25, Y45, Y65, Y75, Y85		

B=birth, W=week, M=month, Y=year

GVAP and WPRO framework indicators, 2014

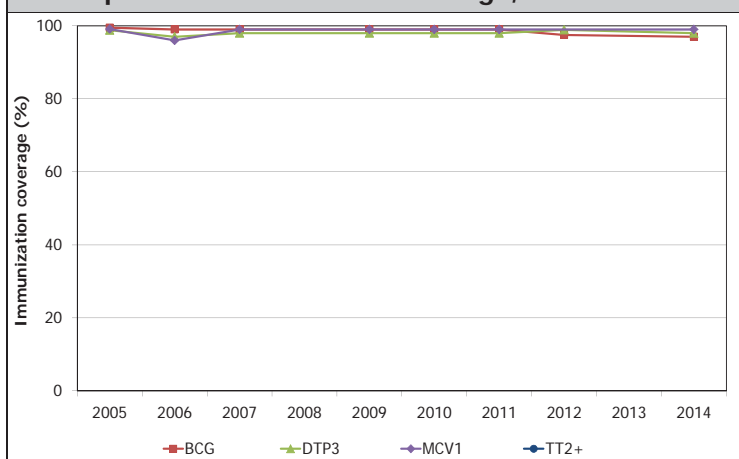
Polio-free status sustained*	Yes
At least one dose of IPV introduced by end of 2015*	Yes
Country validated as having achieved MNT elimination*	Yes
Country verified for measles elimination by 2015*	No
Seroprevalence of chronic hepatitis B infection (HBsAg) reduced to <1% in 5 year olds by 2017*	2.1% (1988)
Rubella-containing vaccine introduced*	Yes
Rubella case-based data submitted to WPRO*	Yes
At least one new or underutilized vaccine introduced since 2010*	Yes
DTP3 national immunization coverage >95% by 2020	98%
DTP3 >90% coverage in all districts (proportion of districts with >90% coverage)	100%
DTP dropout rate <5%	0%
Increasing trend in domestic expenditure since 2010	No data
NITAG established	Yes

* 2015 data

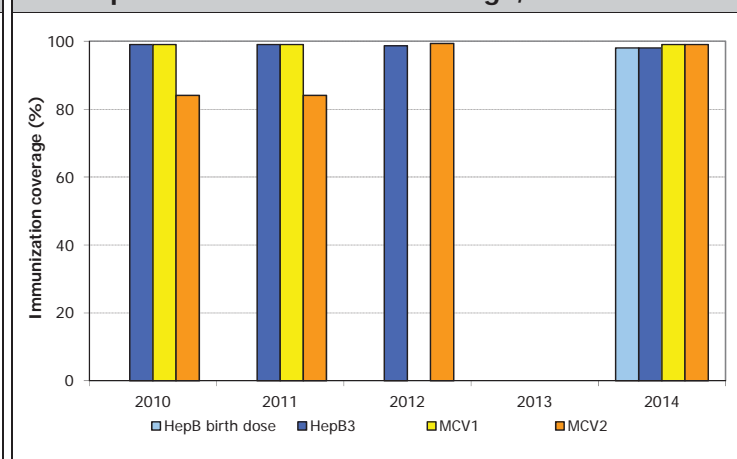
NIP priority needs

1. Implementation of the vaccination against pertussis among contacts of new-borns
2. Introduction of HPV vaccine
3. Recommendations for vaccination in health care settings

Reported immunization coverage, 2005–2014



Reported immunization coverage, 2010–2014



Reported cases

Year	AFP		Measles		Rubella		Neonatal tetanus		Total tetanus		Diphtheria		Pertussis	
	Non-polio AFP rate	% adequate specimens	Cases	IR	Cases	IR	Cases	IR	Cases	IR	Cases	IR	Cases	IR
2005	0.0		0	0.0	0	0.0	0	0.0	0	0.0	0	0.0	0	0.0
2006	0.0		0	0.0			0	0.0	0	0.0	0	0.0		
2007	1.0	0%	0	0.0			0	0.0	0	0.0	0	0.0	6	2.3
2008	0.0		0	0.0	0	0.0	0	0.0	0	0.0	0	0.0	0	0.0
2009	0.0		0	0.0	0	0.0	0	0.0	0	0.0	0	0.0	30	11.2
2010	0.0		0	0.0	0	0.0	0	0.0	0	0.0	0	0.0	12	4.4
2011	0.0		0	0.0	0	0.0	0	0.0	0	0.0	0	0.0	0	0.0
2012	0.0		0	0.0	0	0.0	0	0.0	0	0.0	0	0.0	0	0.0
2013	0.0		0	0.0	0	0.0	0	0.0	0	0.0	0	0.0	0	0.0
2014	0.0													

Non-polio AFP rate = incidence per 100 000 under 15 years; % adequate specimens = % of AFP cases with 2 specimens within 14 days of paralysis onset
 IR = incidence rate: for measles and rubella, per 1 000 000 population; for neonatal tetanus, per 1000 live births; for all others, per 100 000 population. Total tetanus includes neonatal tetanus cases.
 Population source: United Nations, Department of Economic and Social Affairs, Population Division: World Population Prospects



French Polynesia, 2014

Planning		Safe immunization	
Multi-year plan (MYP)	No	% districts using auto-disable syringes	
Annual workplan for immunization activities	Yes	System to monitor AEFI	Yes
Includes measles elimination activities	No	Number of AEFI	0
Includes hepatitis B control activities	No	Disposal methods	Incineration
Updated wild poliovirus importation and cVDPV response plan	No	Vaccine AEFI review committee	No
		Injection safety review	No

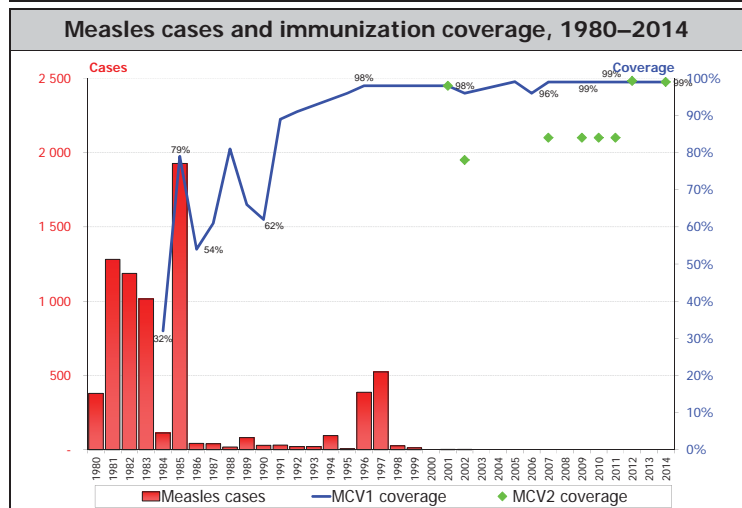
Measles elimination			
Confirmed measles case rate* (per 1 million population)	0.0	Year of MCV1 introduction	1982
Discarded as non-measles rate* (Target: ≥ 2 per 100 000 population)	0.0	Year of MCV2 introduction	1998
% suspected cases with adequate specimens* (Target: $\geq 80\%$)		Year and target population of last SIA	1998
Does surv system assess measles importation? (No. of imported cases)	Yes (0)	Number vaccinated (coverage achieved)	

* Data from measles monthly country reports to WHO

Rubella			
Rubella-containing vaccine in NIP	Yes	Number of rubella cases (IgM positive)	
Is rubella notifiable?	No	Surveillance system for congenital rubella syndrome	No

Percent of under-15 year population susceptible ¹ to measles and MCV1 coverage, 1999–2014
Not available

Measles immunity profile, 2014
Not available



School-based immunization	
Is there a school entry requirement?	Yes
If no, do schools check immunization status at enrolment?	
What vaccines are required/checked?	BCG, HepB, DTP Hib, MR (Pre-school); HepB, DTP, MR (Primary/Secondary)
At what school level/year?	
Is routine vaccination given at school?	Yes
If yes, is this part of a comprehensive school-health program that delivers other health interventions?	Yes

Coverage surveys	
Year of most recent survey	2012
Type of survey	Review of school health cards
Coverage results	

Operational indicators for hepatitis B control program			
Year HepB vaccine first used in NIP	1990	Systems to monitor HepB vaccine birth dose	Hospitals, health centers, home
Year HepB3 introduced nationwide	1992	Systems to deliver HepB vaccine birth dose	Hospitals, health centers, home
Year HepB birth dose introduced		No. of districts with >10% difference between DTP3-HepB3	0
HepB vaccine birth dose coverage within 24 hours	98%	HepB vaccine third dose coverage	98%

Surveillance for Invasive Bacterial Vaccine-preventable Disease and Rotavirus				
Disease	Type of surveillance system	Year surveillance started	Number of facilities under surveillance	Number of cases with positive tests
Rotavirus diarrhea				
Bacterial meningitis	Nationwide			Meningococcus—1
Bacterial pneumonia				

Note: Unless otherwise specified, data are from the WHO/UNICEF Joint Reporting Forms (JRF) for Immunization