



# Country Profile-Measles Elimination Philippines

## Section 1. Demographic information (data for 2011)

	UN World Population Prospects	WHO-UNICEF Joint Reporting Form (JRF)
<1 year old	2 298 728	2 525 386
< 5 years old	11 160 645	12 950 694
< 15 years old	33 204 289	36 401 644
Total population	94 852 030	95 931 069

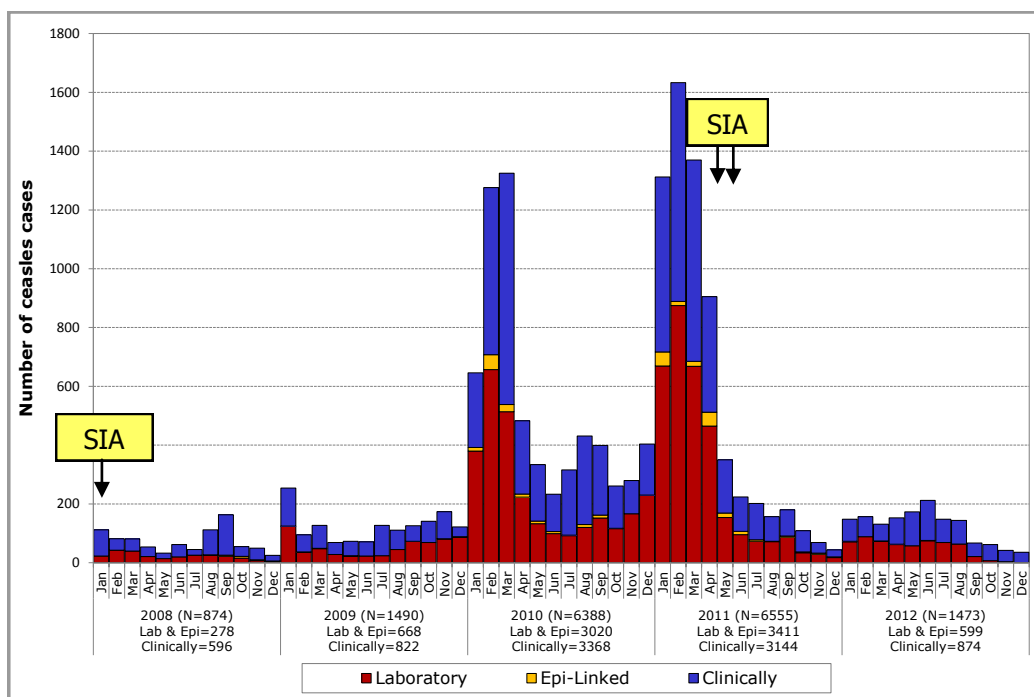


## Section 2. Measles incidence, epidemiologic and virologic characteristic

	Suspected measles cases	Confirmed measles cases				Discarded as non-measles	Pending classification	Deaths due to measles	Measles incidence <sup>1</sup>	Detected genotypes D9
		Laboratory	Epi-linked	Clinically	Total					
2008	1581	262	16	596	874	707	0	8	9.8	
2009	2937	660	8	822	1490	1447	0	10	16.6	
2010	10 376	2883	137	3368	6388	3988	0	34	68.2	11
2011	9509	3240	171	3144	6555	2953	1	28	69.1	24
2012	3507	594	5	900	1499	2008	0	5	15.5	5

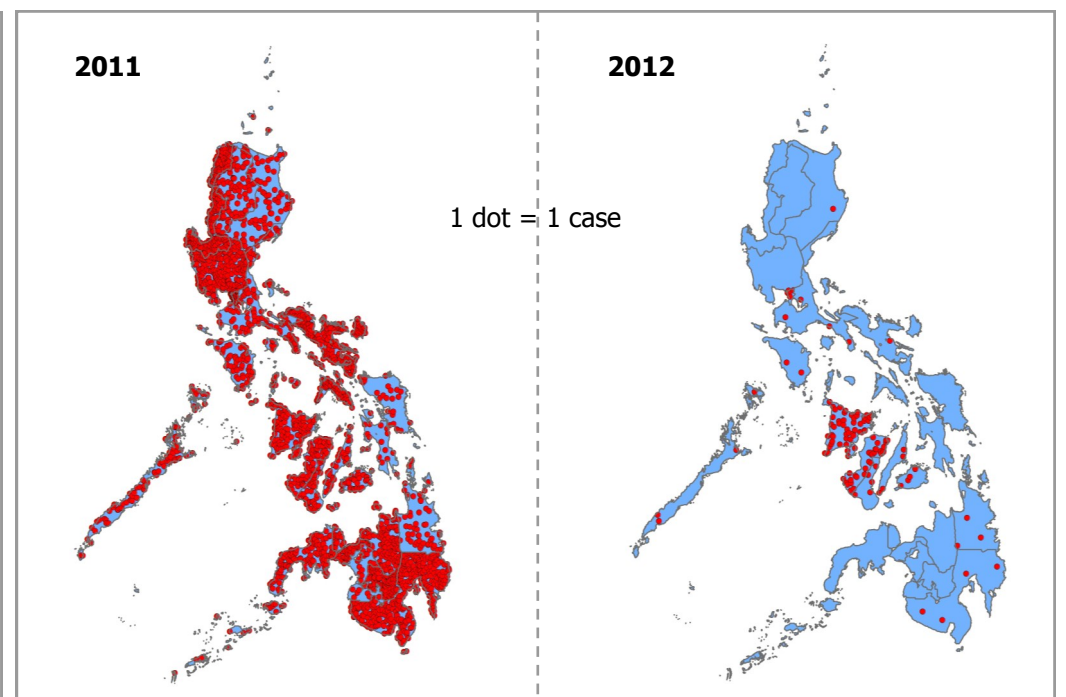
<sup>1</sup> Per 1 million population

Confirmed measles cases by month of onset, 2008–2012



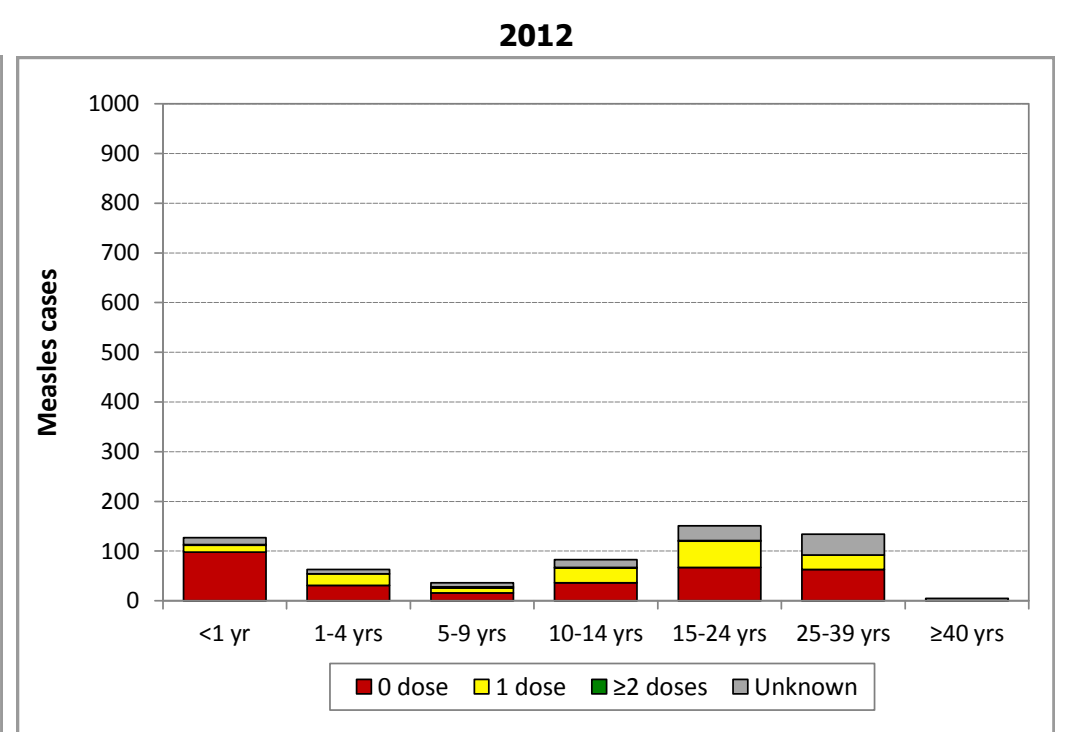
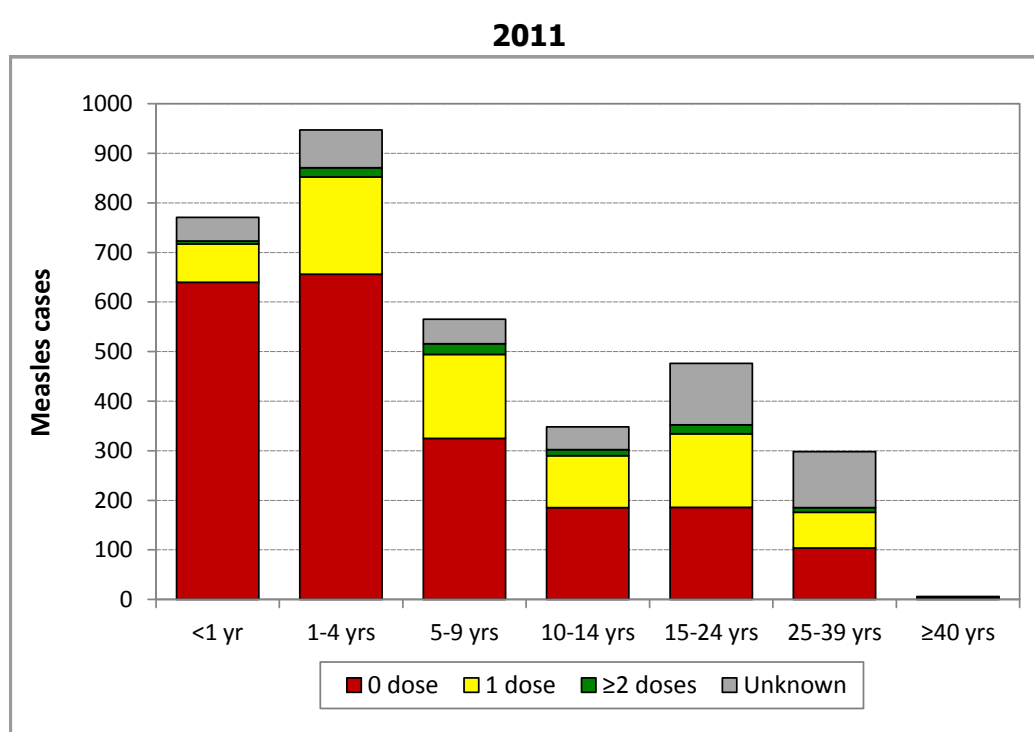
N = Number of cases  
SIA = Supplementary immunization activities

Lab-confirmed and epi-linked measles cases by region, 2011–2012



\* Dots are placed at random within the corresponding region, and might not reflect the exact location of the case.

Lab-confirmed and epi-linked measles cases, by age group and vaccination status





# Country Profile-Measles Elimination Philippines

## Section 3. Surveillance and laboratory performance

	Discarded non-	% second level units <sup>2</sup> with	% suspected cases with	% suspected cases with	% clinically
2008	0.8	29.4%	37.0%	66.5%	68.2%
2009	1.6	82.4%	29.4%	73.8%	55.2%
2010	4.3	94.1%	40.6%	87.1%	52.7%
2011	3.1	88.2%	88.6%	98.0%	48.0%
2012	2.1	64.7%	57.1%	80.4%	60.0%

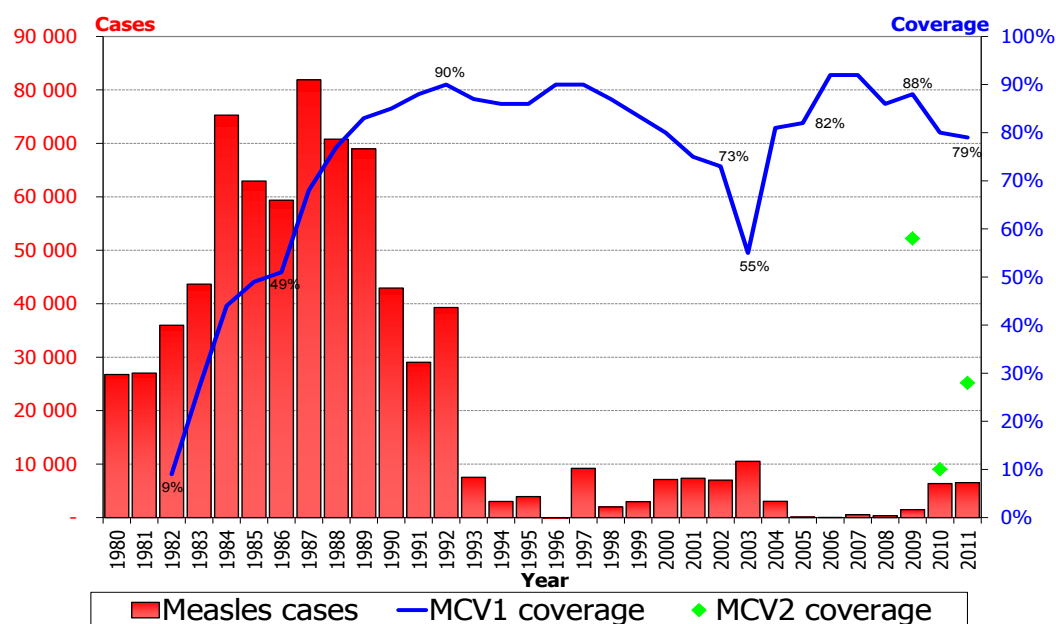
<sup>1</sup> Per 100 000 population

<sup>2</sup> For Philippines, region level is used (N = 17)

	Total no. of cases tested	Total no. of samples tested	Serology					Virus detection				WHO accredited lab	
			Serum and blood			Dried blood spot		Results ≤7 days	Measles virus isolation (swab, urine, PBMC)		Measles RT-PCR		
			Samples tested for measles IgM	Measles IgM (+)	Measles IgM equiv	No. received	No. (+)		No. of samples tested	No. of isolates	No. of samples tested		No. (+)
			No.	No.	No.			%					
2010	7256	7256	7120	2830	250	0	-	43.9%	0	0	0	0	Yes
2011	7620	7620	7620	3829	424	0	-	72.6%	179	30	0	0	Yes
2012	3065	3080	3048	654	125	3	0	95.3%	62	3	12	2	Yes

## Section 4. Immunity against measles

Reported measles cases and immunization coverage



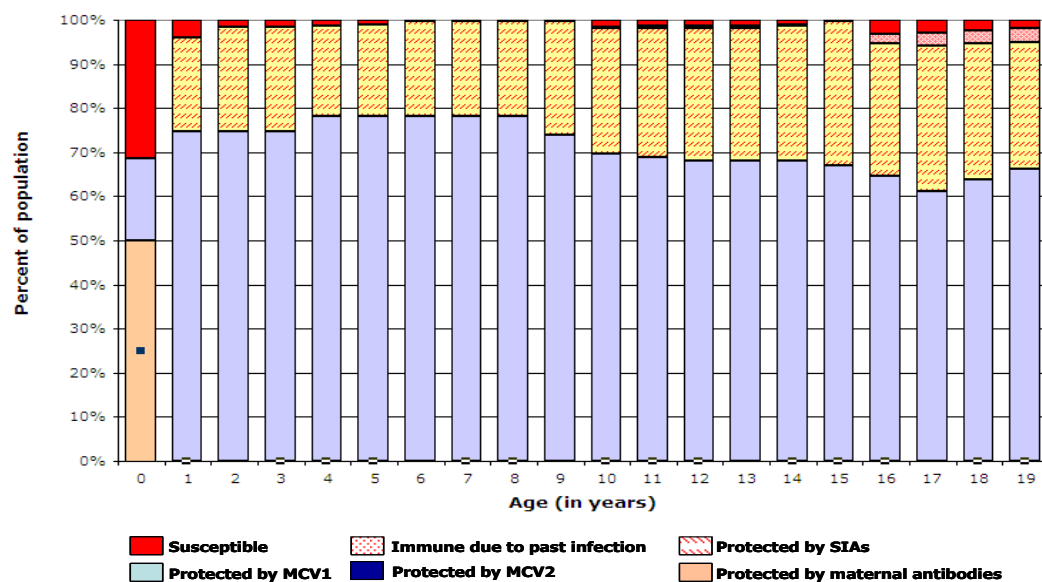
Measles immunization

	Year of introduction	Vaccine type	Schedule	School entry requirement for measles?
MCV1	1983	M	9m	No
MCV2	2010	MMR	12m	

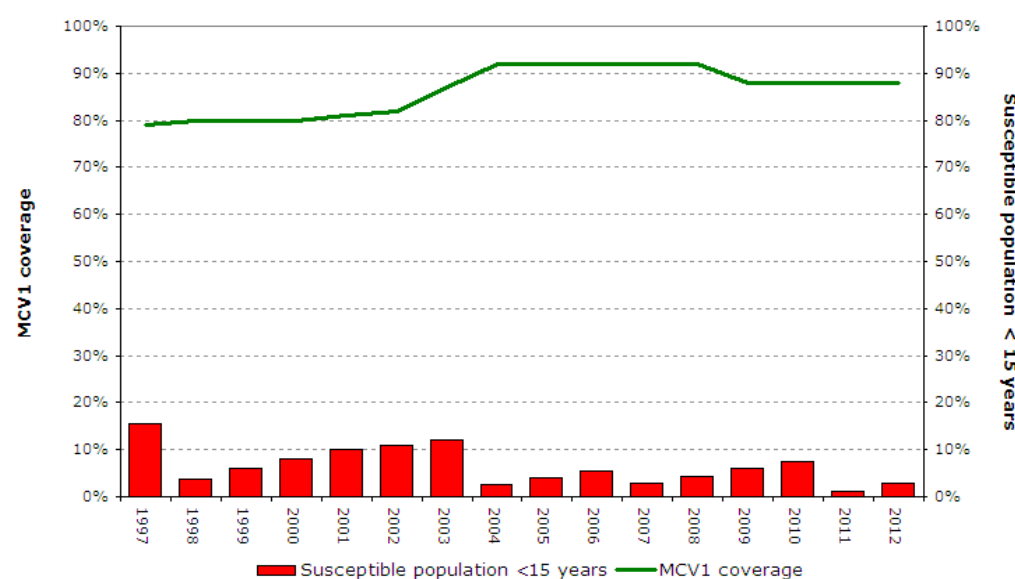
Supplementary immunization activities (SIAs)

Year	Age	Vaccine type	No. vaccinated	Coverage
1998	9m-14y	M	22 950 000	85%
2004	9m-7y	M	17 474 136	95%
2007	9m-48m	M	8 216 421	95%
2011	9m-9y	MR	15 649 907	84%

Immunity profile by age, 2012



Percent of under 15 year population susceptible to measles and MCV1 coverage



## Section 5. Sustainability

Does country have multi-year plan?	No
For what years?	
Are measles elimination activities included?	
Does country have annual workplan in 2011?	Yes
Are measles elimination activities included?	Yes, with budget line item
% of expenditure on vaccines used in routine immunization funded by government	
% of expenditure on routine immunization funded by government	
Does national health plan include budget for measles elimination activities through 2012?	Yes
Amount required through 2012	US\$ 3.2 million
Amount committed by government through 2012	US\$ 3.2 million

## Data Sources:

1. WHO-UNICEF Joint Reporting Forms (JRF) for Immunization
2. Measles and rubella monthly country and laboratory reports to WHO – data through December 2012, as of March 2013
3. United Nations, Department of Economic and Social Affairs, Population Division (2011). World Population Prospects: The 2010 Revision, CD-ROM Edition. (Medium-fertility variant)
4. Measles Strategic Planning (MSP) Tool version 2.0
5. Measles Nucleotide Surveillance (MeaNS)
6. Measles Laboratory Accreditation Checklist
7. Country presentations - Measles elimination consultation (April 2012)

Please visit our website:

[www.wpro.who.int/immunization](http://www.wpro.who.int/immunization)

Please send your comments to:

[WPR\\_EPIdata@wpro.who.int](mailto:WPR_EPIdata@wpro.who.int)