



Western Pacific Regional Office of the World Health Organization

WPRO Dengue Situation Update, 22 January 2013

Regional dengue activity is variable. While Australia, Cambodia, Lao PDR, Malaysia Philippines, Singapore and Viet Nam all reported more cases as compared to the previous year for the same time period, the recent trend is declining or remains low in Australia, Cambodia, Lao PDR, Philippines. Singapore and Malaysia, however, are seeing an increase in activity, and New Caledonia has been seeing high activity since late 2012.

Table. Cumulative reported number of dengue cases in 2012 and 2011 (for the same time period), by country.*

	Recent trend**	Cumulative No. reported cases		2012/2011 ratio
		2012	2011	
Asia Sub-region				
Australia***	↓	1 458	817	1.8
Cambodia	↓	42 362	15 980	2.7
Lao PDR	↓	308 (2013)	34 (2012)	9.0
Malaysia	↑	1 035 (2013)	921 (2012)	1.1
Philippines	↓	178 644	125 975	1.4
Singapore	↑	207 (2013)	64 (2012)	3.2
Viet Nam	↑	77 618	64 532	1.2
Pacific Sub-region				
New Caledonia	↑	292 (2013)	0 (2012)	

*Dengue reporting systems vary by country and any change in the surveillance system over time is not reflected in the above figures. Number of reported cases listed for 2011 and 2012 are for the same time period for each year.

**Recent trend is based on the 3 week moving average for countries reporting by week and monthly comparisons for the last complete month for countries reporting by month.

***Australia: *Aedes aegypti* and *Aedes albopictus* are present only in Northern Queensland and Torres Strait Islands

Australia: Monthly trends decreased from November to December 2012. 1 458 cases reported up to 31 December in 2012.

Cambodia: Weekly trend has continued to decrease based on the three-week moving average. 42 362 cases (189 deaths; CFR 0.4%) reported up to 01 January in 2013. 15 980 cases (73 deaths; CFR 0.5%) in 2011 for the same time period.

Lao PDR: Weekly trend has decreased based on the three-week moving average. 308 cases (0 deaths; CFR 0.0%) reported up to 11 January in 2013; however, only 34 cases (0 deaths; CFR 0.0%) in 2012 for the same time period, and an epidemic alert remains at the country level.

Malaysia: Weekly trend increased based on the three-week moving average. 1 035 cases (2 deaths; CFR 0.2%) reported up to 12 January in 2013; 921 cases (2 deaths; CFR 0.2%) in 2012 for the same time period.

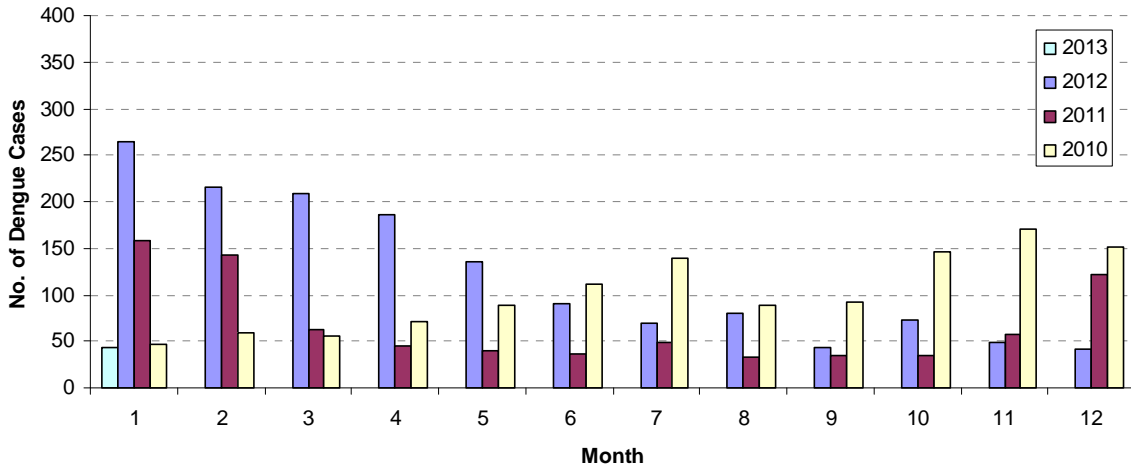
Philippines: Weekly trend has continued to decrease based on the three-week moving average. 178 644 cases (872 deaths; CFR 0.5%) reported up to 31 December in 2012; 125 975 cases (654 deaths; CFR 0.5%) in 2011 for the same time period.

Singapore: Weekly trend increased based on the three-week moving average. 207 cases reported up to 12 January in 2013, and the weekly number of cases is above the epidemic threshold level.

Viet Nam: Monthly trend increased from October (8 493 cases) to November (10 063 cases). 77 618 cases (68 deaths; CFR 0.1%) reported up to 30 November in 2012; 64 532 cases (59 deaths; CFR 0.1%) in 2011 for the same period.

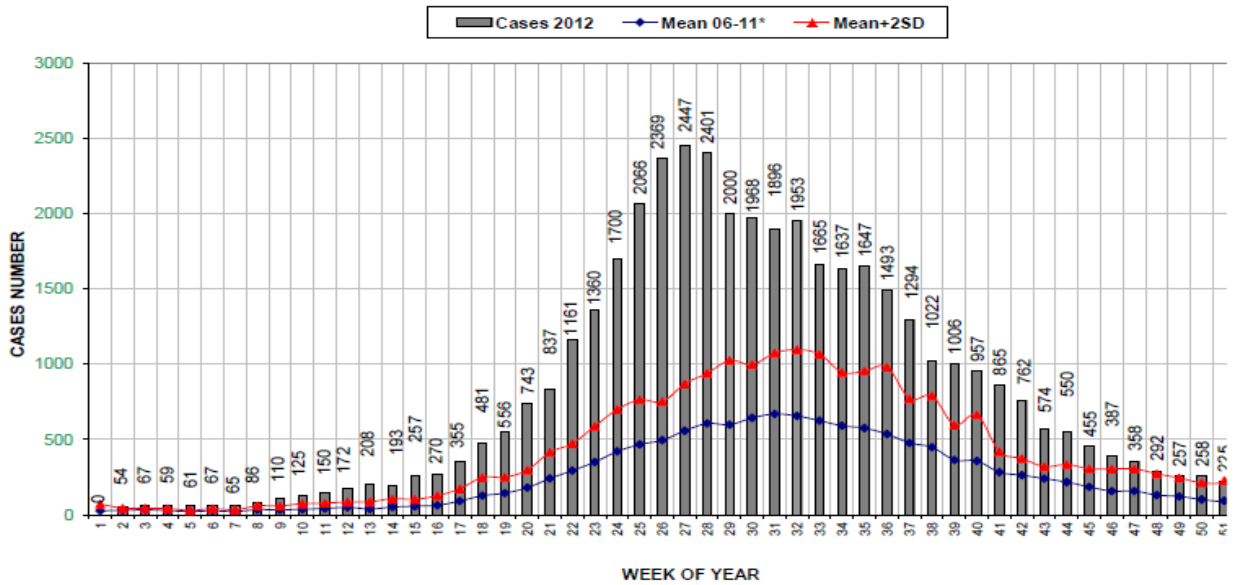
New Caledonia: Weekly trend increased based on the three-week moving average. 603 cases reported up to week three in 2013; no case was reported in 2012 for the same period.

Dengue Australia

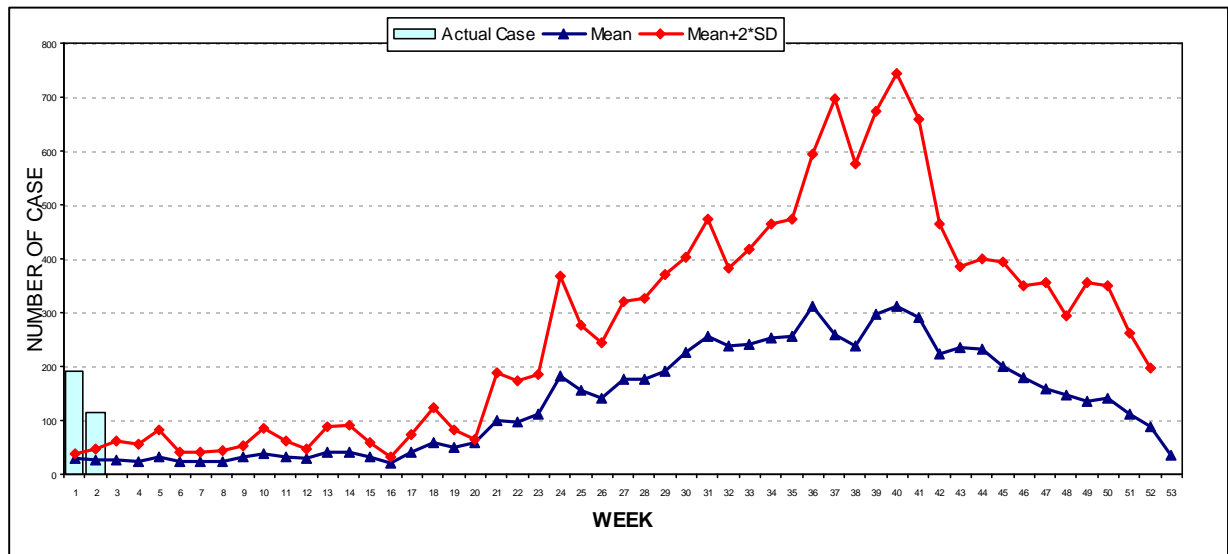


Australia as of 21 January 2013 (Source: Dept of Health and Ageing)

RELATIONSHIP OF DENGUE CASES BY WEEKS IN CAMBODIA 2012 WITH Mean AND Mean+2SD DURING 2006-2011 (*Excluded 2007)



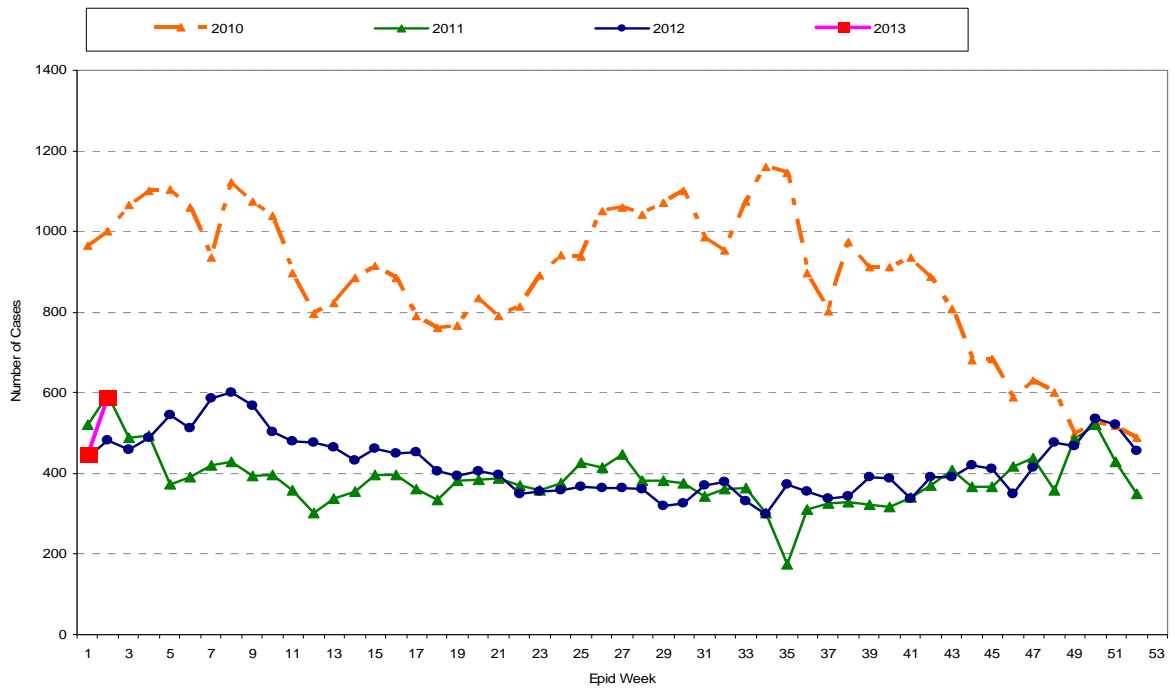
Cambodia up to 09 January in 2013, excluding 2007 epidemic year (Source: MOH)



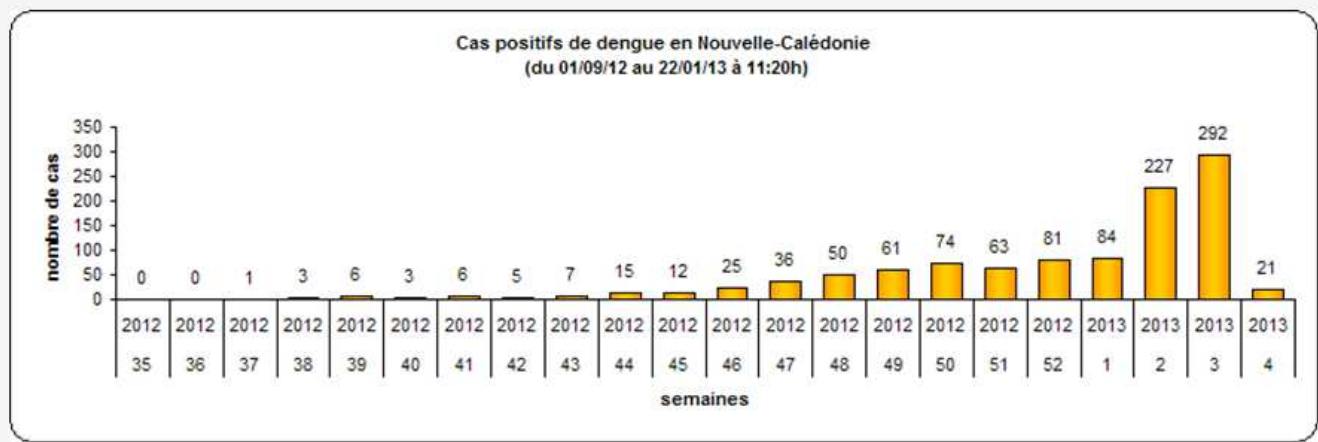
Lao PDR up to 11 January in 2013 (Source: MOH)

Mean and Mean + 2 Standards Deviations (Mean+2 SD) refer to data from the last 5 years 2006-2011, excluding 2010 epidemic year

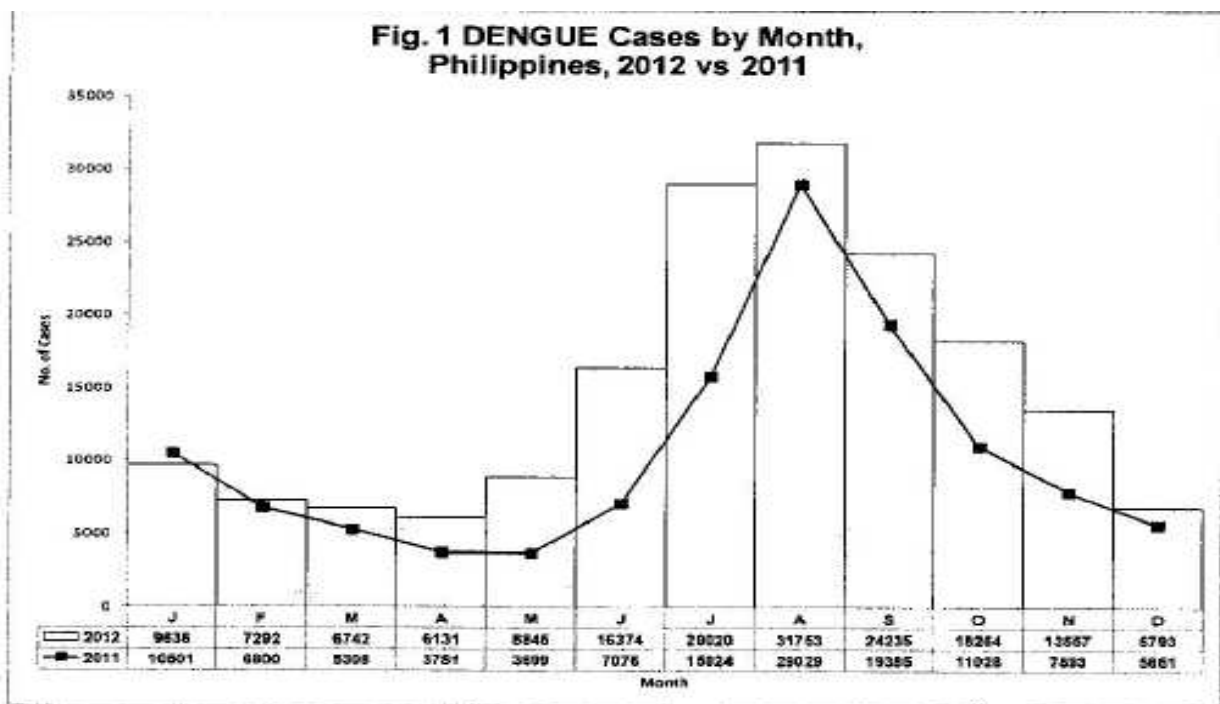
Dengue Fever/Dengue Hemorrhagic Fever; Malaysia; by Epid Week; 2010,2011, 2012 and 2013



Malaysia up to 12 January in 2013 (Source: MOH)

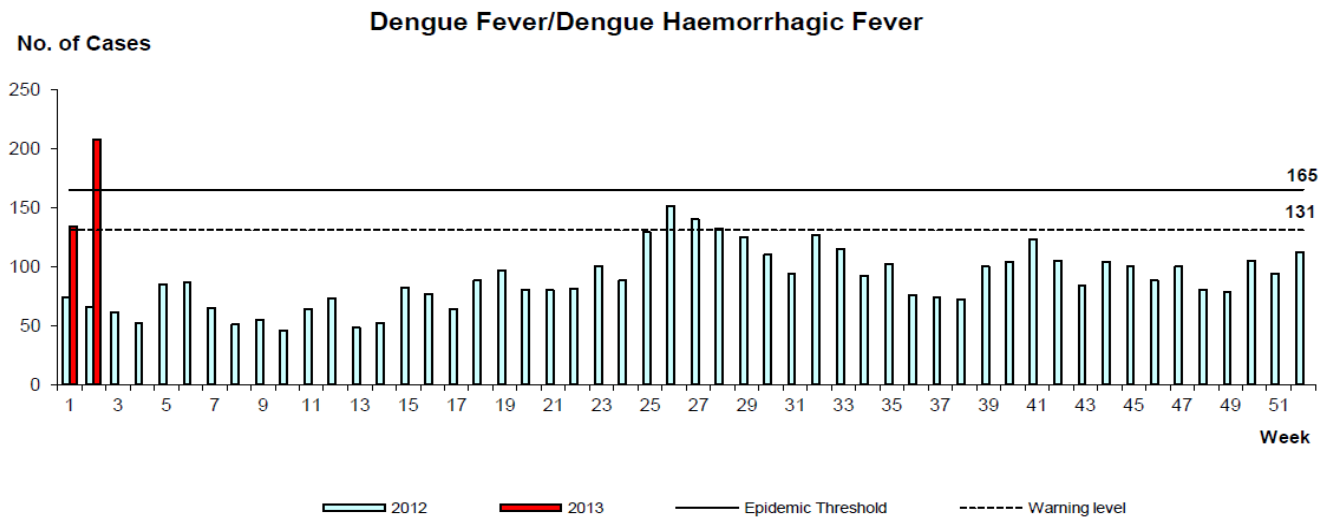


New Caledonia up to 15 January in 2013 (Source: MOH)



Philippines up to 31 December in 2012 (Source: DOH)

WEEKLY INCIDENCE OF VECTOR-BORNE DISEASES, 2012-2013



Singapore up to 12 January in 2013 (Source: MOH)