



Japan, 2009

Population

Total population*	127 156 222
Births	1 091 156 (in 2008)
NIP target	1 088 000 (in 2008)

* United Nations, Department of Economic and Social Affairs, Population Division (2009). World Population Prospects: The 2008 Revision, CD-ROM Edition.

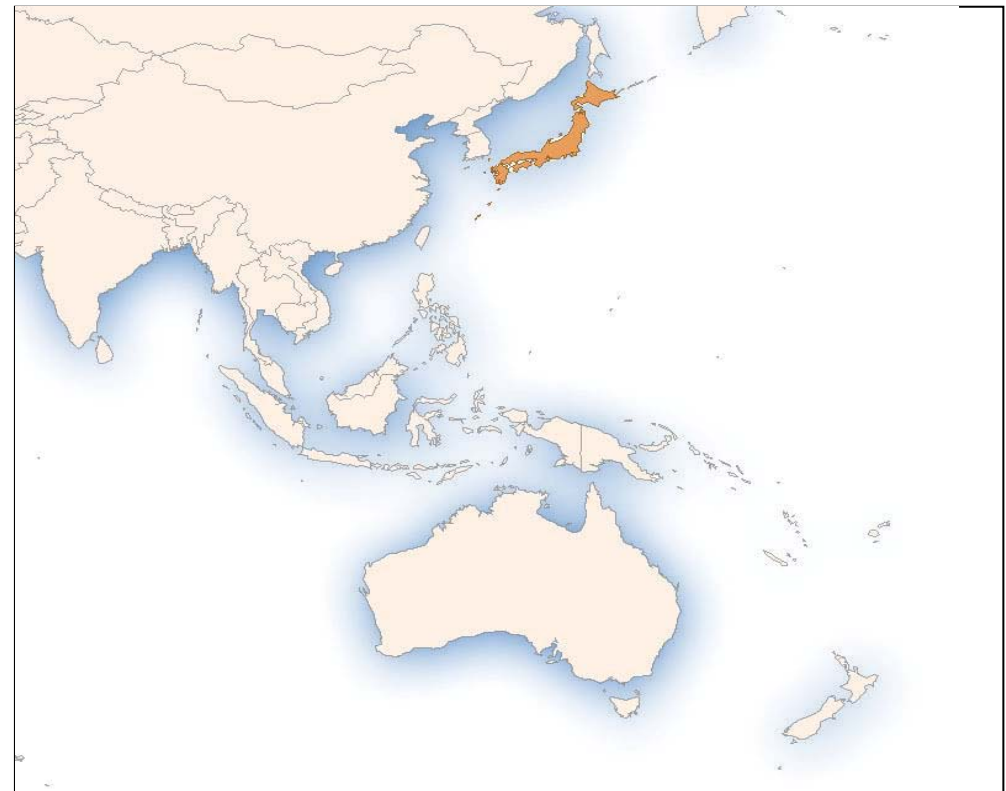
Finance

GDP* per capita	US\$ 34,326
Line item in budget for vaccines?	No data
Line item in budget for injection supplies?	No data
% of NIP costs government funded	No data
% of NIP vaccine government funded	No data

*Western Pacific Country Health Information Profiles, 2009 Revision

NIP priority needs

--	--



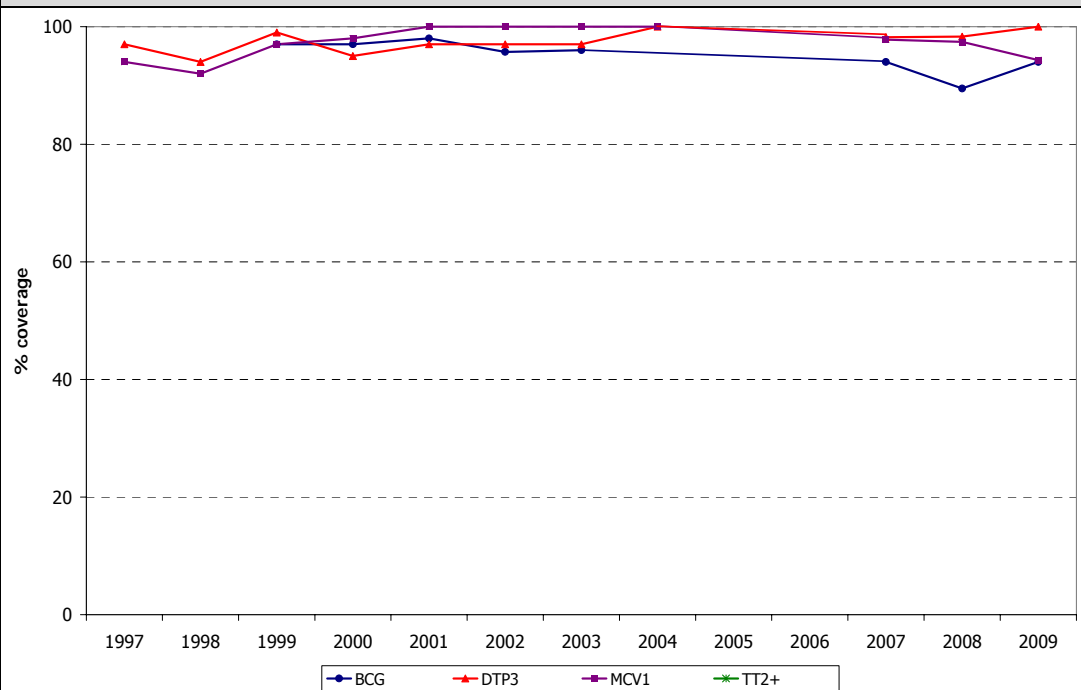
Delivery of immunization services

% of population served by outreach	No data
No. (%) of districts with DTP3 coverage < 50%	0 (0%)
No. (%) of districts with DTP3 coverage > 90% (in 2006)	No data
No. (%) of districts with MCV1 coverage < 80% (in 2006)	No data
No. (%) of districts with MCV1 coverage > 90% (in 2006)	No data
No. (%) of districts w/ DTP drop-out > 10% (in 2006)	4 (8.5%)
No. (%) of districts w/ DTP1 – MCV1 drop-out >10% (in 2006)	3 (6.4%)

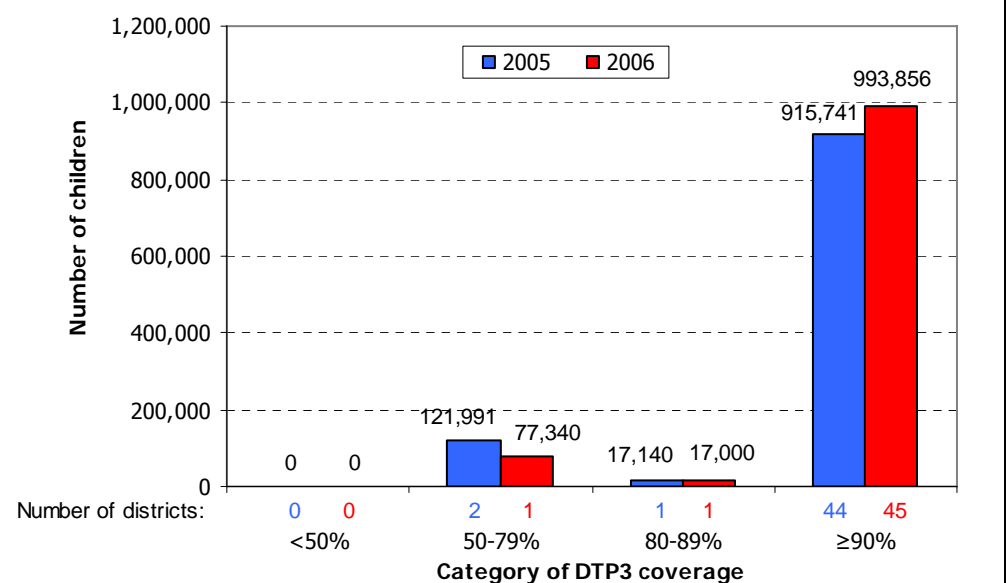
Immunization schedule

BCG	M6
DT	Y11
DTP (acellular)	M3; M4.5; M6; M18
Influenza	Adults over Y65
JE MBDI	M36; M37; M48
Measles	Y1; Y5
MR	Y1; Y5
OPV	M6; Y1
Rubella	Y1; Y5

Reported immunization coverage, 1997-2009



Number of children in districts, by category of DTP3 coverage, 2005-2006



Reported cases

Year	AFP		Measles		Neonatal tetanus		Total tetanus		Diphtheria		Pertussis	
	Non-polio AFP rate	% adequate specimens	Cases	IR	Cases	IR	Cases	IR	Cases	IR	Cases	IR
2000			22 552	177.5	0	0.0	91	0.1	1	0.0	3804	3.0
2001			33 812	265.7	0	0.0	80	0.1	1	0.0	1760	1.4
2002			12 473	97.8	0	0.0	106	0.1	0	0.0	1458	1.1
2003			8286	64.9			69	0.1	0	0.0	1534	1.2
2004			8752	68.5			69	0.1	0	0.0	1534	1.2
2005												
2006			520	4.1			117	0.1			1504	1.2
2007									0	0.0		
2008			11 015	86.1			123	0.1	0	0.0	6753	5.3
2009			741	5.8			113	0.1	0	0.0	5208	4.1

Non-polio AFP rate = incidence per 100 000 under 15 years; % adequate specimens = % of AFP cases with 2 specimens within 14 days of paralysis onset.

IR = incidence rate: for measles, per 1 000 000 population; for neonatal tetanus, per 1000 live births; for all others, per 100 000 population. Total tetanus includes neonatal tetanus cases.

Population source: United Nations, Department of Economic and Social Affairs, Population Division. World Population Prospects.



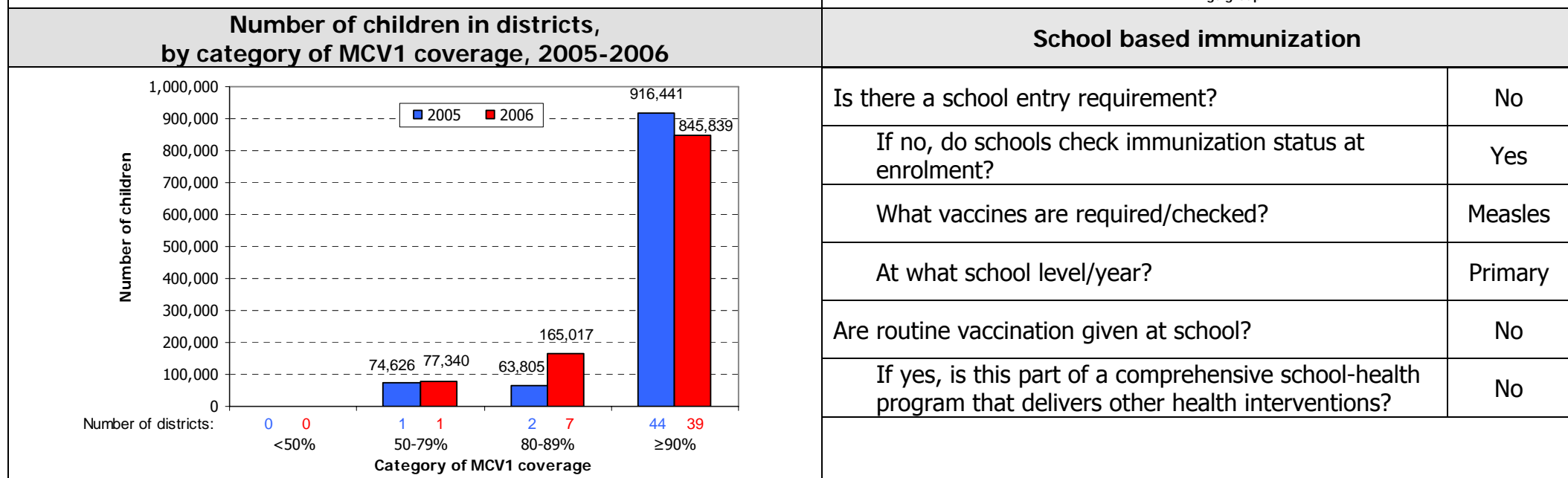
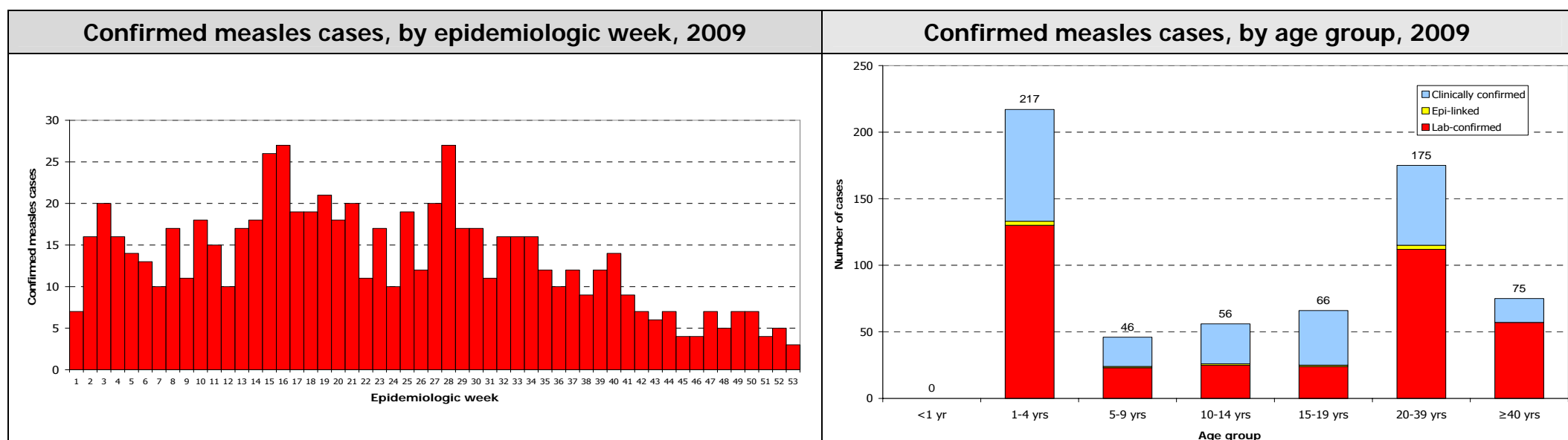
Japan, 2009

Plans/Review	Available	Period covered	Safe immunization	
Multi-year plan (MYP)	No		% of districts using AD syringes	0%
Annual workplan for immunization activities	Yes		System to monitor AEFI	Yes
Includes measles elimination activities	Yes		Number of AEFI	411 (in 2008)
Includes Hepatitis B control activities	No		Disposal methods	Incineration
Updated wild poliovirus importation and cVDPV response plan	Yes			
Injection safety review	Yes			

Measles elimination				
Confirmed measles case rate		5.5	Year of MCV1 introduction	1966
Discarded measles case rate	(Target: $\geq 2/100,000$ pop)	0.0	Year of MCV2 introduction	2008
% suspected cases w/ adeq. specimens	(Target: at least 80%)	No data	Year and target pop of last SIA	No data
Does surv. system assess measles importation? (No. of imp. cases)		Yes (1)	No. vaccinated (coverage achieved)	No data

Rubella				
Rubella containing vaccine in NIP		Yes	Number of rubella cases (IgM+)	No data
Is rubella notifiable?		Yes	Surveillance system for CRS	Yes

From measles case-based surveillance data



Operational indicators for Hepatitis B control program			
Year HepB vaccine first used in NIP	No data	Systems to monitor HepB vaccine birth dose	Hospitals
Year HepB vaccine expanded nationwide	No data	Systems to deliver HepB vaccine birth dose	Hospitals
HepB vaccine birth dose in schedule	No	Estimated chronic infection rate in under 5 years old	No data
HepB vaccine birth dose coverage within 24 hours	No data	No. of districts with >10% difference between DTP3-HepB3	No data

Disease	Type of surveillance system	Year surveillance start	Number of facilities under sentinel surveillance	Number of patients positive
Rotavirus diarrhea	No data	No data	No data	No data
Bacterial meningitis	Sentinel	No data	457	108
Bacterial pneumonia	Nationwide	No data	Nationwide	3
Meningoencephalitis	Nationwide	No data	No data	No data

Note: Unless otherwise specified, data are from WHO/UNICEF Joint Reporting Form for Immunization.