



# Macao SAR, China, 2009

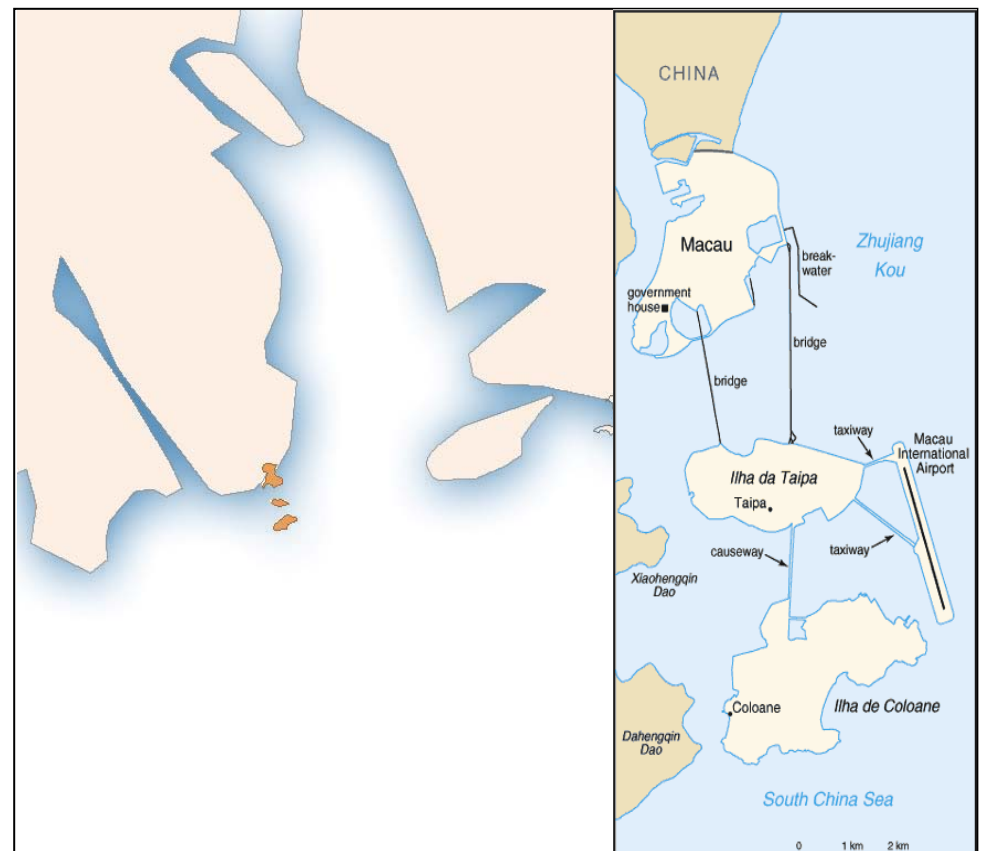
Population	
Total population*	537 973
Births	4600
NIP target	4600

\* United Nations, Department of Economic and Social Affairs, Population Division (2009). World Population Prospects: The 2008 Revision, CD-ROM Edition.

Finance	
GDP* per capita	US\$ 39 036
Line item in budget for vaccines?	No
Line item in budget for injection supplies?	Yes
% of NIP costs government funded	90%
% of NIP vaccine government funded	100%

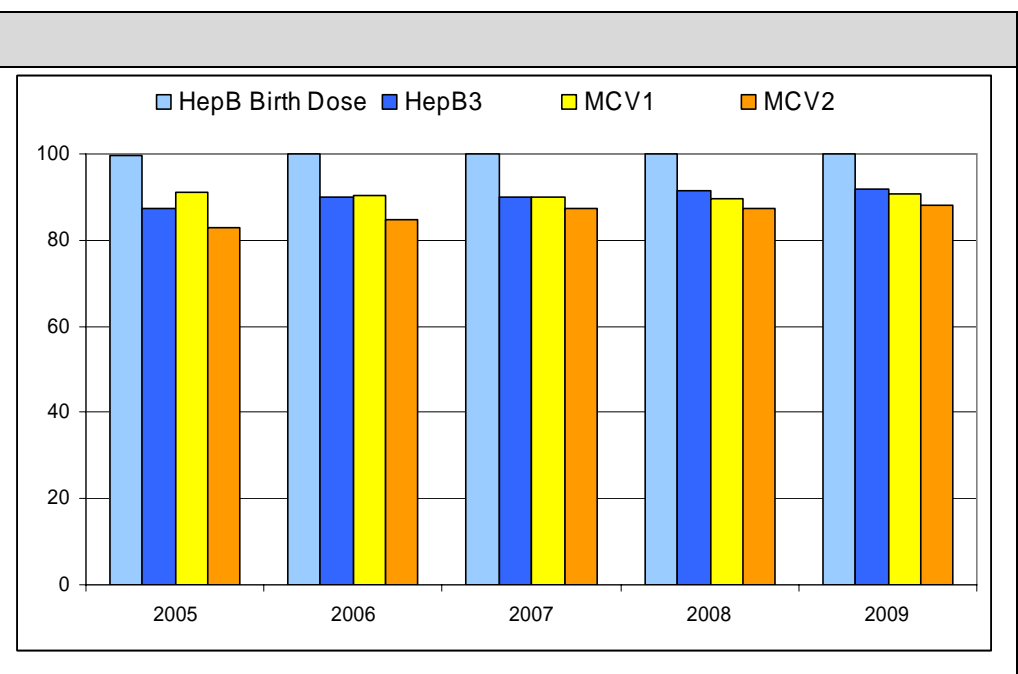
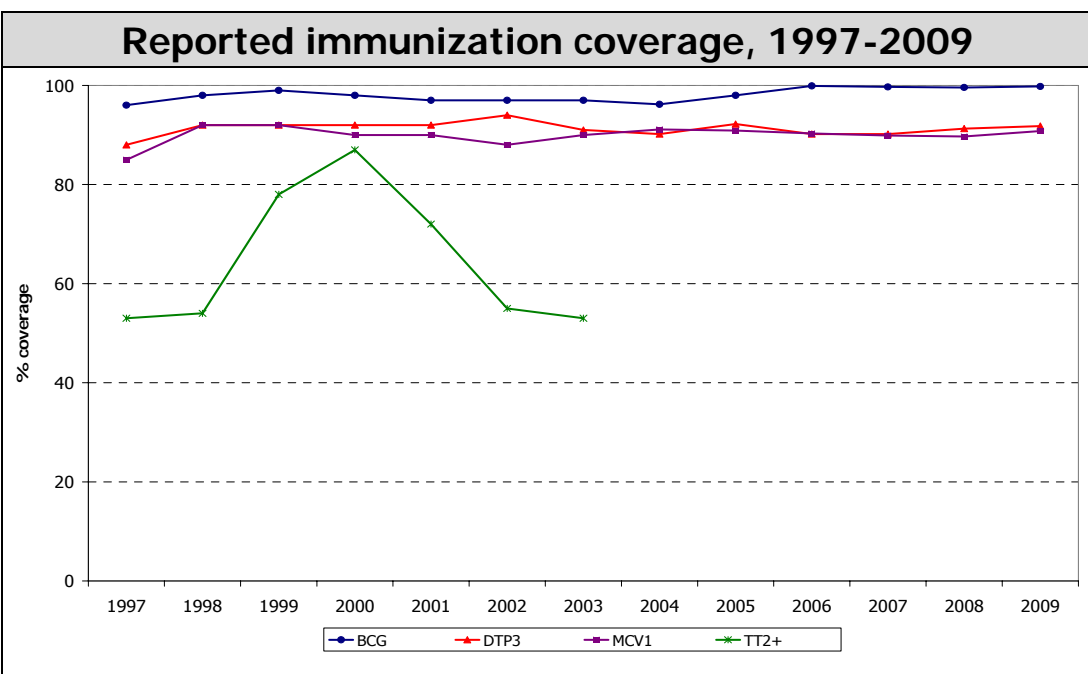
\*Western Pacific Country Health Information Profiles, 2009 Revision

NIP priority needs
Disease burden and cost-benefit / cost effectiveness analysis when new vaccine considered to be introduced into the SAR's immunization program



Delivery of immunization services	
% of population served by outreach	100% (For primary school 1 & 6)
No. (%) of districts with DTP3 coverage < 50%	No data
No. (%) of districts with DTP3 coverage > 90%	No data
No. (%) of districts with MCV1 coverage < 80%	No data
No. (%) of districts with MCV1 coverage > 90%	No data
No. (%) of districts w/ DTP drop-out > 10%	No data
No. (%) of districts w/ DTP1 – MCV1 drop-out >10%	No data

Immunization schedule			
BCG	B	Hib	M2; M4; M6; M15
TT	Y22; Y32; Y42; Y52; Y62; Y72	Influenza	M6-Y18;
DTP		MMR	M12; M18
DTPIPV (acellular)	M2; M4; M6; M18; Y5-6	Td	Y12
HepB	B; M1; M6	Varicella	M12



Reported cases												
Year	AFP		Measles		Neonatal tetanus		Total tetanus		Diphtheria		Pertussis	
	Non-polio AFP rate	% adequate specimens	Cases	IR	Cases	IR	Cases	IR	Cases	IR	Cases	IR
2000	2.0	100%	5	11.3	0	0.0	0	0.0	0	0.0	0	0.0
2001	2.0	100%	3	6.7	0	0.0	0	0.0	0	0.0	0	0.0
2002	1.0	100%	3	6.6								
2003			3	6.5	0	0.0	0	0.0	0	0.0	0	0.0
2004	2.0	50%	0	0.0	0	0.0	0	0.0	0	0.0	0	0.0
2005	1.0	100%	0	0.0	0	0.0	0	0.0	0	0.0	0	0.0
2006	3.0	67%	2	4.2	0	0.0	0	0.0	0	0.0	0	0.0
2007			0	0.0	0	0.0	0	0.0	0	0.0	0	0.0
2008	1.0	100%	4	8.3	0	0.0	0	0.0	0	0.0	2	0.4
2009	1.0	100%	0	0.0	0	0.0	0	0.0	0	0.0	0	0.0

Non-polio AFP rate = incidence per 100 000 under 15 years; % adequate specimens = % of AFP cases with 2 specimens within 14 days of paralysis onset.  
 IR = incidence rate: for measles, per 1 000 000 population; for neonatal tetanus, per 1000 live births; for all others, per 100 000 population. Total tetanus includes neonatal tetanus cases.  
 Population source: United Nations, Department of Economic and Social Affairs, Population Division. World Population Prospects.



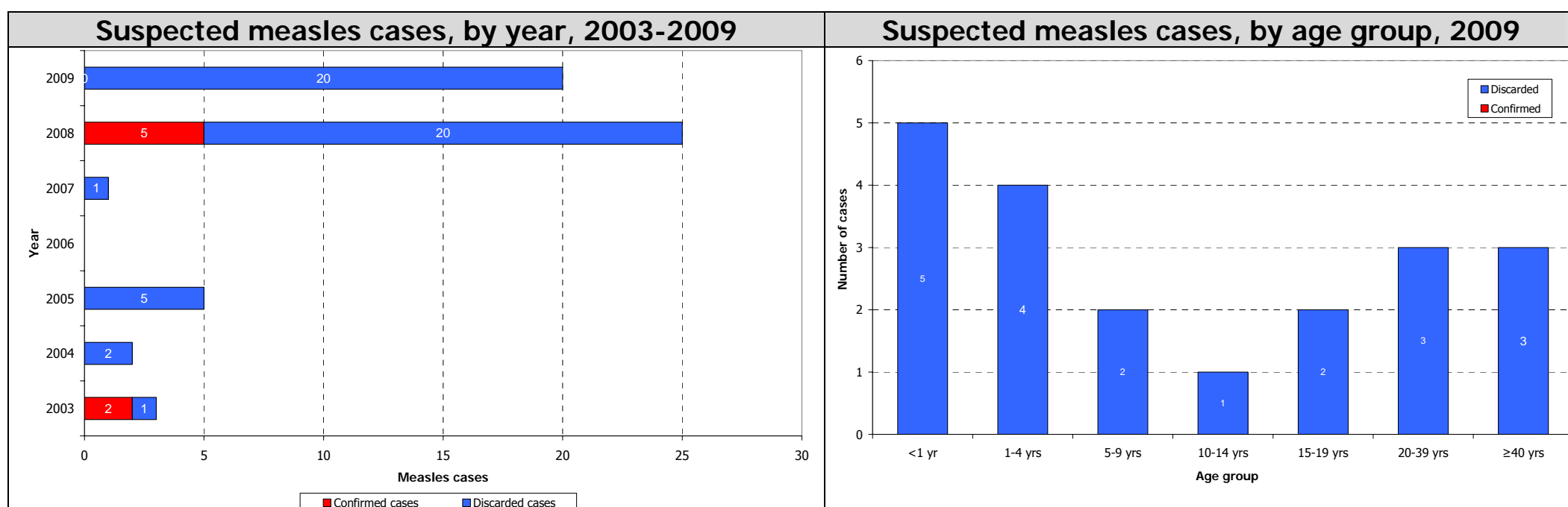
# Macao SAR, China, 2009

Plans/Review	Available	Period covered	Safe immunization	
Multi-year plan (MYP)	No		% of districts using AD syringes	0%
Annual workplan for immunization activities	Yes		System to monitor AEFI	Yes
Includes measles elimination activities	Yes		Number of AEFI	32
Includes Hepatitis B control activities	Yes		Disposal methods	Incineration
Updated wild poliovirus importation and cVDPV response plan	Yes			
Injection safety review	Yes			

Measles elimination				
Confirmed measles case rate		0.0	Year of MCV1 introduction	No data
Discarded measles case rate	(Target: $\geq 2/100,000$ pop)	3.7	Year of MCV2 introduction	1991
% suspected cases w/ adeq. specimens	(Target: at least 80%)	100%	Year and target pop of last SIA	No data
Does surv. system assess measles importation? (No. of imp. cases)		Yes (0)	No. vaccinated (coverage achieved)	No data

Rubella				
Rubella containing vaccine in NIP		Yes	Number of rubella cases (IgM+)	1
Is rubella notifiable?		Yes	Surveillance system for CRS	Yes

From measles case-based surveillance data



Operational indicators for Hepatitis B control program			
Year HepB vaccine first used in NIP	1984	Systems to monitor HepB vaccine birth dose	Hospitals
Year HepB vaccine expanded nationwide	1989	Systems to deliver HepB vaccine birth dose	Hospitals
HepB vaccine birth dose in schedule	Yes	Estimated chronic infection rate in under 5 years old	0.3
HepB vaccine birth dose coverage within 24 hours	100%	No. of districts with >10% difference between DTP3-HepB3	No data

Disease	Type of surveillance system	Year surveillance start	Number of facilities under sentinel surveillance	Number of patients positive
Rotavirus diarrhea	Nationwide	No data	2	233
Bacterial meningitis	Nationwide	No data	No data	0
Bacterial pneumonia	Sentinel	No data	2	No data
Meningoencephalitis	Nationwide	No data	No data	0

**Note:** Unless otherwise specified, data are from WHO/UNICEF Joint Reporting Form for Immunization.