



Malaysia, 2009

Population	
Total population*	27 467 834
Births	No data
NIP target	No data

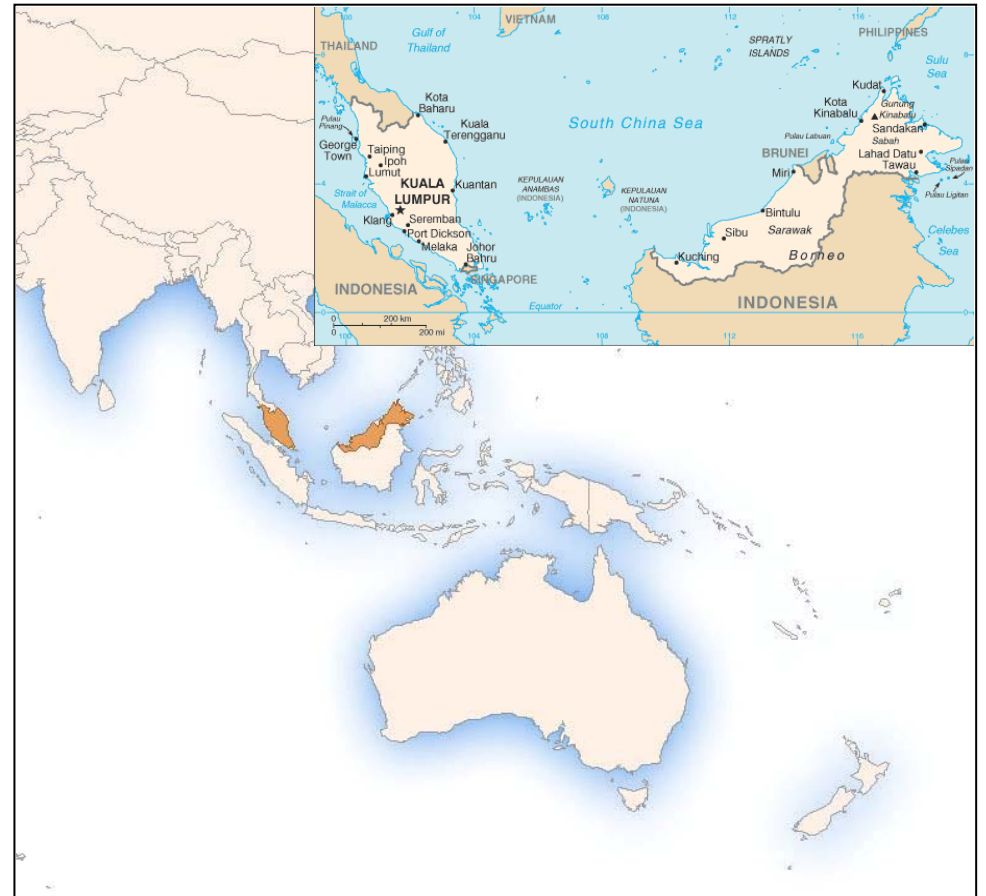
* United Nations, Department of Economic and Social Affairs, Population Division (2009). World Population Prospects: The 2008 Revision, CD-ROM Edition.

Finance	
GDP* per capita	US\$ 5937
Line item in budget for vaccines?	Yes
Line item in budget for injection supplies?	Yes
% of NIP costs government funded	80%
% of NIP vaccine government funded	80%

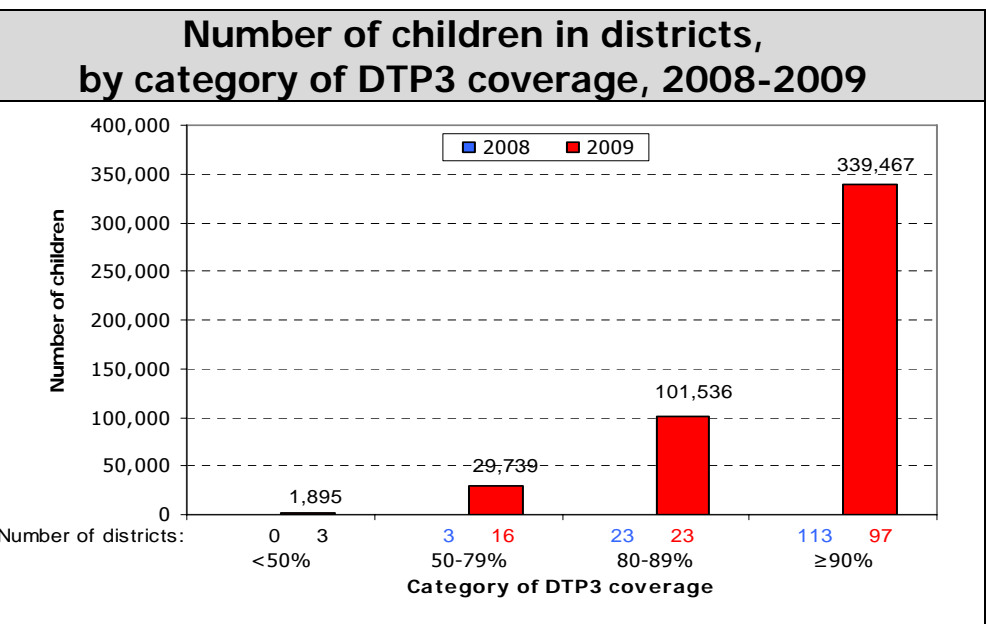
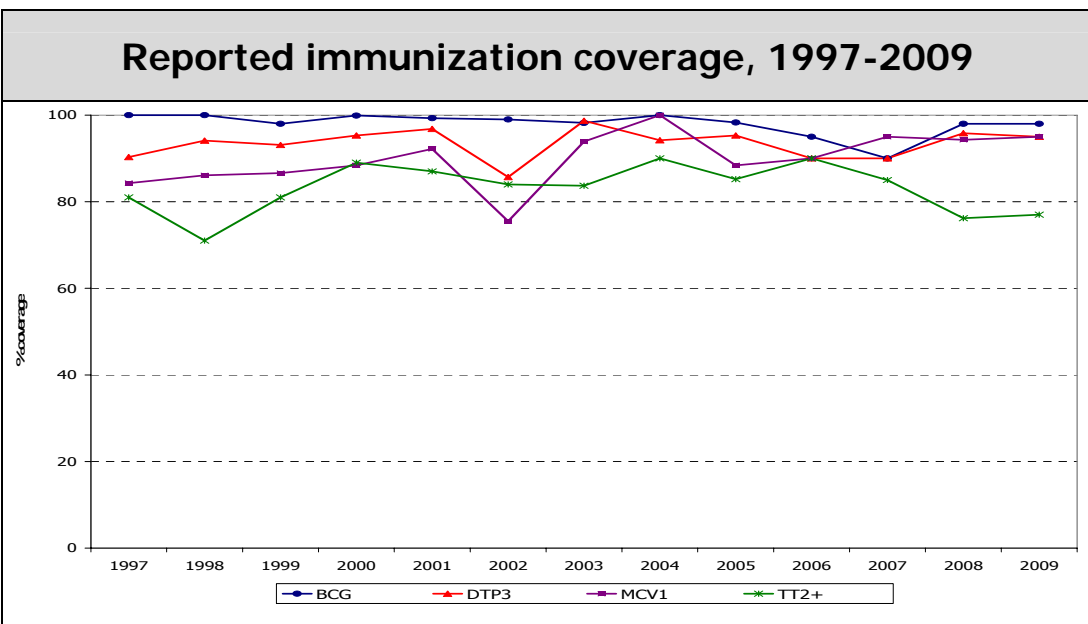
*Western Pacific Country Health Information Profiles, 2009 Revision

NIP priority needs	
1. Implementation of IPV vaccine as well as acellular pertussis, and human papillomavirus vaccine	
2. Measles elimination program	
3. Identifying and implement corrective measures on poorly performing areas	

Delivery of immunization services	
% of population served by outreach	No data
No. (%) of districts with DTP3 coverage < 50%	3 (2.1%)
No. (%) of districts with DTP3 coverage > 90%	97 (70%)
No. (%) of districts with MCV1 coverage < 80%	3 (2.1%)
No. (%) of districts with MCV1 coverage > 90%	117 (65.4%)
No. (%) of districts w/ DTP drop-out > 10%	No data
No. (%) of districts w/ DTP1 – MCV1 drop-out >10%	No data



Immunization schedule	
BCG	B (Birth)
HepB	B (Birth);1m;6m
DTP	18m
DTPHibHepB	2m; 3m; 5m;18m
OPV	2m; 3m; 5m; 18m; 7y
Measles	6m
MMR	12m; 7y
TT	15y
JE (mouse brain derived inactivated)	9m; 10m; 18m; 5y; 8y; 11y
DT	7y
DTPHibIPV	2m; 3m; 5m; 18m



Reported cases												
Year	AFP		Measles		Neonatal tetanus		Total tetanus		Diphtheria		Pertussis	
	Non-polio AFP rate	% adequate specimens	Cases	IR	Cases	IR	Cases	IR	Cases	IR	Cases	IR
2000	1.6	71%	6187	265.8	20	0.0	40	0.2	1	0.0	42	0.2
2001	1.3	58%	2207	92.8	8	0.0	28	0.1	4	0.0	26	0.1
2002	1.3	67%	899	37.1	11	0.0	35	0.1	7	0.0	23	0.1
2003	1.3	76%	632	25.6	8	0.0	18	0.1	11	0.0	28	0.1
2004	1.3	65%	5729	227.4	14	0.0	33	0.1	3	0.0	40	0.2
2005	1.6	71%	1287	50.2	6	0.0	3	0.0	3	0.0	8	0.0
2006	1.3	70%	564	21.6	11	0.0	28	0.1	0	0.0	6	0.0
2007	1.2	74%	394	14.8	14	0.0	36	0.1	2	0.0	15	0.1
2008	1.3	67%	334	12.4	13	0.0	29	0.1	4	0.0	11	0.0
2009	1.2	72%	57	2.1	4	0.0	14	0.1	0	0.0	36	0.1

Non-polio AFP rate = incidence per 100 000 under 15 years; % adequate specimens = % of AFP cases with 2 specimens within 14 days of paralysis onset.
 IR = incidence rate: for measles, per 1 000 000 population; for neonatal tetanus, per 1000 live births; for all others, per 100 000 population. Total tetanus includes neonatal tetanus cases.
 Population source: United Nations, Department of Economic and Social Affairs, Population Division. World Population Prospects.



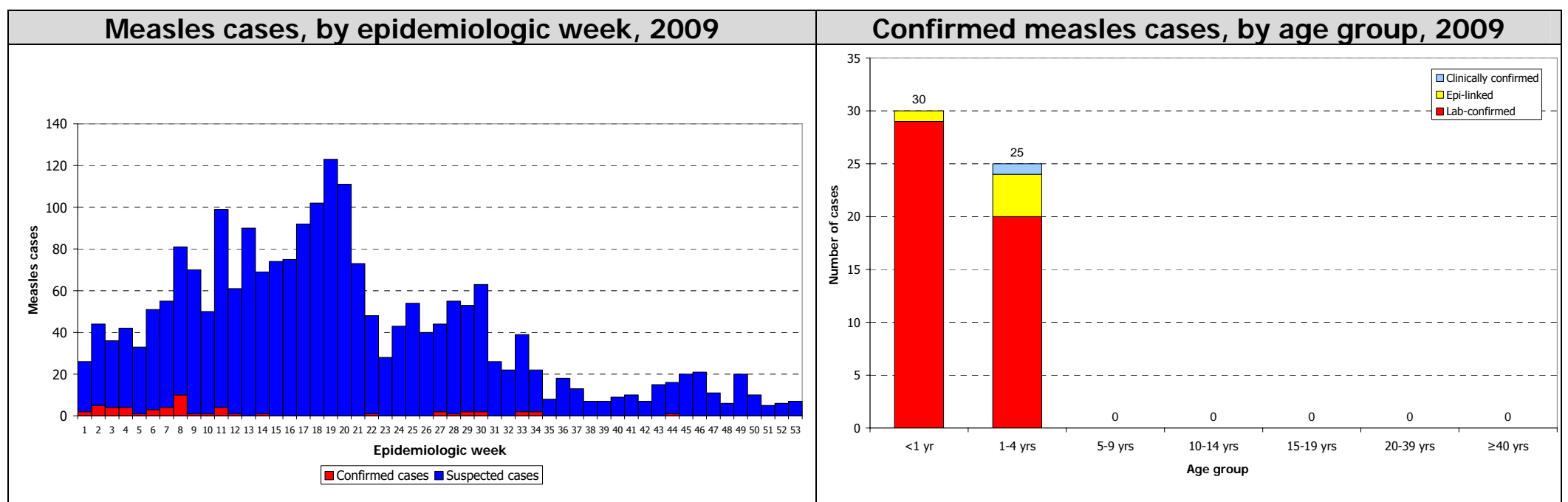
Malaysia, 2009

Plans/Review	Available	Period covered	Safe immunization	
Multi-year plan (MYP)	No		% of districts using AD syringes	0%
Annual workplan for immunization activities	Yes		System to monitor AEFI	Yes
Includes measles elimination activities	Yes		Number of AEFI	No data
Includes Hepatitis B control activities	Yes		Disposal methods	No data
Updated wild poliovirus importation and cVDPV response plan	No			
Injection safety review	Yes			

Measles elimination				
Confirmed measles case rate	(Target: <1/million pop)	2.08	Year of MCV1 introduction	1982
Discarded measles case rate	(Target: ≥ 2/100,000 pop)	7.9	Year of MCV2 introduction	2002
% suspected cases w/ adeq. specimens	(Target: at least 80%)	72.4%	Year and target pop of last SIA	2005
Does surv. system assess measles importation? (No. of imp. cases)	Yes (0)		No. vaccinated (coverage achieved)	457 682 (96.95%)

Rubella			
Rubella containing vaccine in NIP	No	Number of rubella cases (IgM+)	288
Is rubella notifiable ?	No	Surveillance system for CRS	No

From measles case-based surveillance data



Operational indicators for Hepatitis B control program			
Year HepB vaccine first used in NIP	1989	Systems to monitor HepB vaccine birth dose	Hospitals, HCs, Home
Year HepB vaccine expanded nationwide	1989	Systems to deliver HepB vaccine birth dose	Hospitals, HCs, Home
HepB vaccine birth dose in schedule	Yes	Estimated chronic infection rate in under 5 years old	0.01%
HepB vaccine birth dose coverage within 24 hours	95%	No. of districts with >10% difference between DTP3-HepB3	

Disease	Type of surveillance system	Year surveillance start	Number of facilities under sentinel surveillance	Number of patients positive
Rotavirus diarrhea	No data	No data	No data	No data
Bacterial meningitis	No data	No data	No data	No data
Bacterial pneumonia	No data	No data	No data	No data
Meningoencephalitis	Nationwide	No data	No data	9

Note: Unless otherwise specified, data are from WHO/UNICEF Joint Reporting Form for Immunization.