



# Brunei Darussalam, 2009

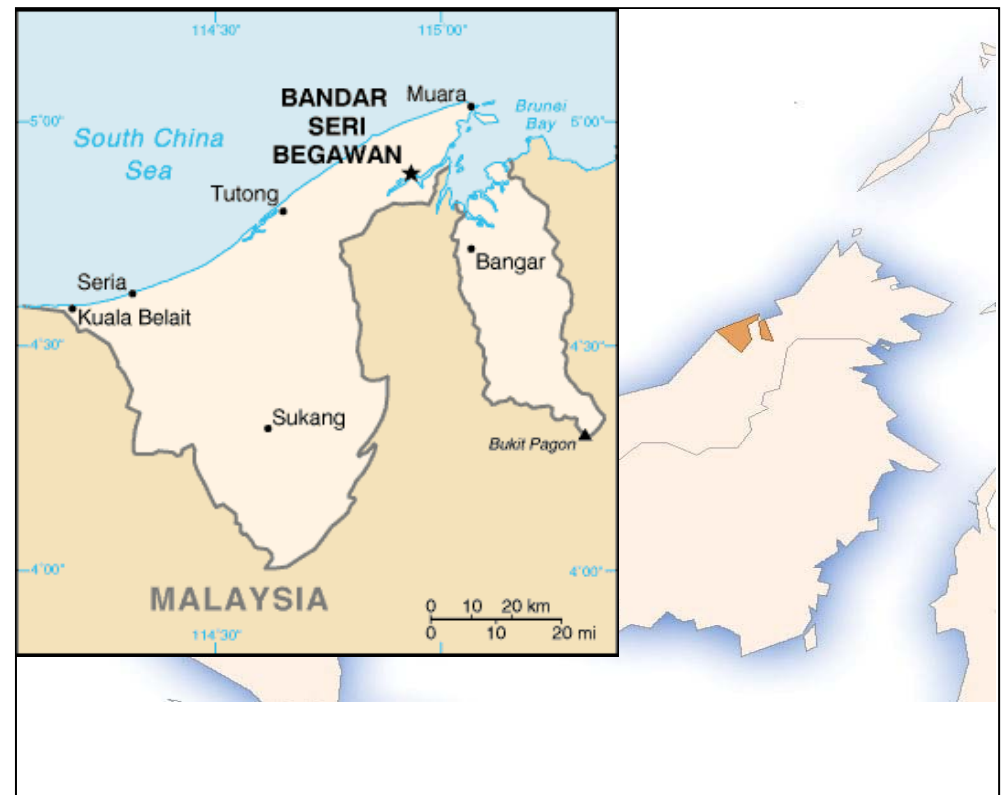
Population	
Total population*	399 687
Births	6505
NIP target	6433

\* United Nations, Department of Economic and Social Affairs, Population Division (2009). World Population Prospects: The 2008 Revision, CD-ROM Edition.

Finance	
GDP* per capita	US\$ 31 228.60
Line item in budget for vaccines?	No data
Line item in budget for injection supplies?	No data
% of NIP costs government funded	No data
% of NIP vaccine government funded	No data

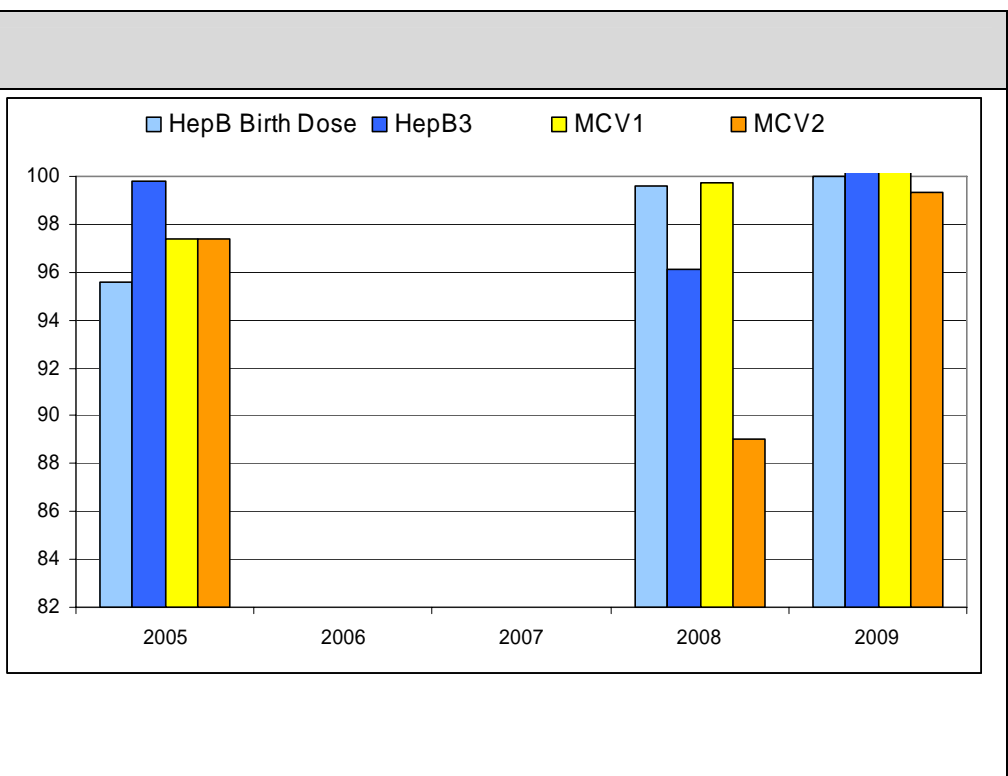
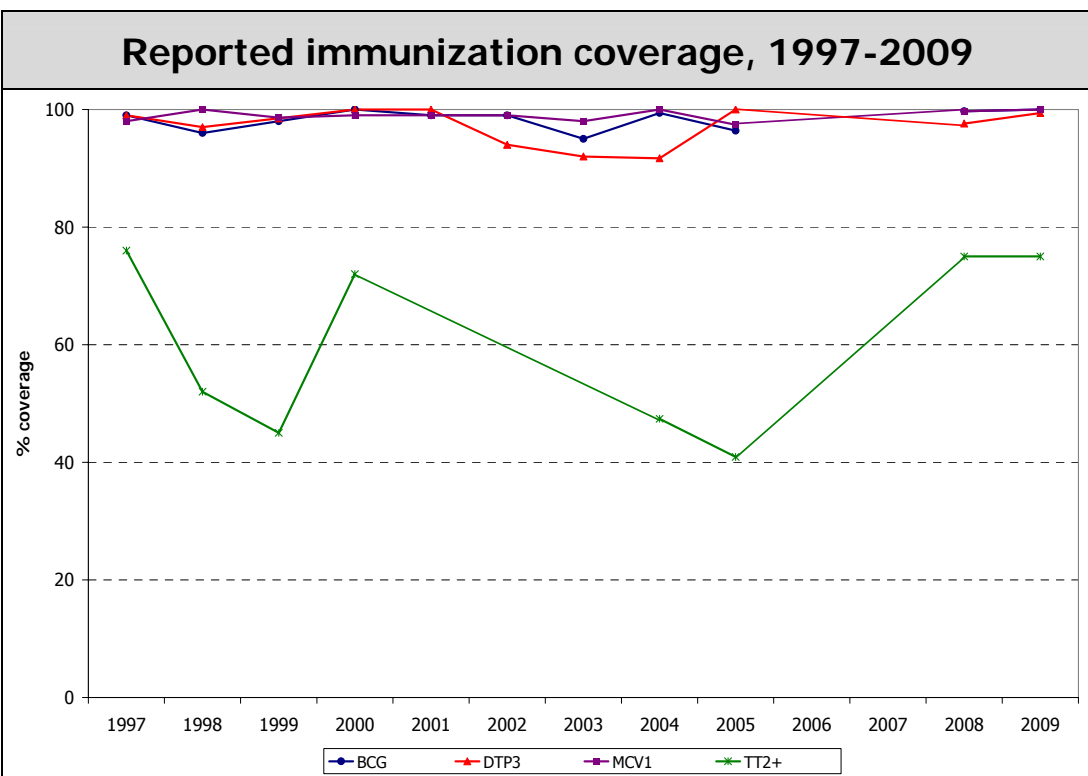
\* Western Pacific Country Health Information Profiles, 2009 Revision

NIP priority needs	
No data	



Delivery of immunization services	
% of population served by outreach	No data
No. (%) of districts with DTP3 coverage < 50%	0 (0%)
No. (%) of districts with DTP3 coverage > 90%	4 (100%)
No. (%) of districts with MCV1 coverage < 80%	0 (0%)
No. (%) of districts with MCV1 coverage > 90%	4 (100%)
No. (%) of districts w/ DTP drop-out > 10%	No data
No. (%) of districts w/ DTP1 – MCV1 drop-out >10%	No data

Immunization schedule			
BCG	B	MMR	Y1; Y3
DT	Y5	OPV	M2; M3; M4
DTPHib	M2; M3; M4	TT	W28; W32
HepB	B; M1; M6		



Reported cases												
Year	AFP		Measles		Neonatal tetanus		Total tetanus		Diphtheria		Pertussis	
	Non-polio AFP rate	% adequate specimens	Cases	IR	Cases	IR	Cases	IR	Cases	IR	Cases	IR
2000	3.0	100%	42	125.9	0	0.0	0	0.0	0	0.0	2	0.6
2001	1.0	0%	11	32.2	0	0.0			0	0.0	0	0.0
2002	1.0	100%										
2003	2.0	100%	24	67.1	0	0.0	0	0.0	0	0.0	0	0.0
2004	1.0	100%	16	43.8	0	0.0	1	0.3	0	0.0	0	0.0
2005	2.0	0%	9	24.1	0	0.0	0	0.0	0	0.0	0	0.0
2006	5.0	40%										
2007	4.0	50%										
2008	4.0	75%	3	7.5	0	0.0	0	0.0	0	0.0	2	0.5
2009	1.0	100%	2	5.0	0	0.0	0	0.0	0	0.0	0	0.0

Non-polio AFP rate = incidence per 100 000 under 15 years; % adequate specimens = % of AFP cases with 2 specimens within 14 days of paralysis onset.  
 IR = incidence rate: for measles, per 1 000 000 population; for neonatal tetanus, per 1000 live births; for all others, per 100 000 population. Total tetanus includes neonatal tetanus cases.  
 Population source: United Nations, Department of Economic and Social Affairs, Population Division. World Population Prospects.



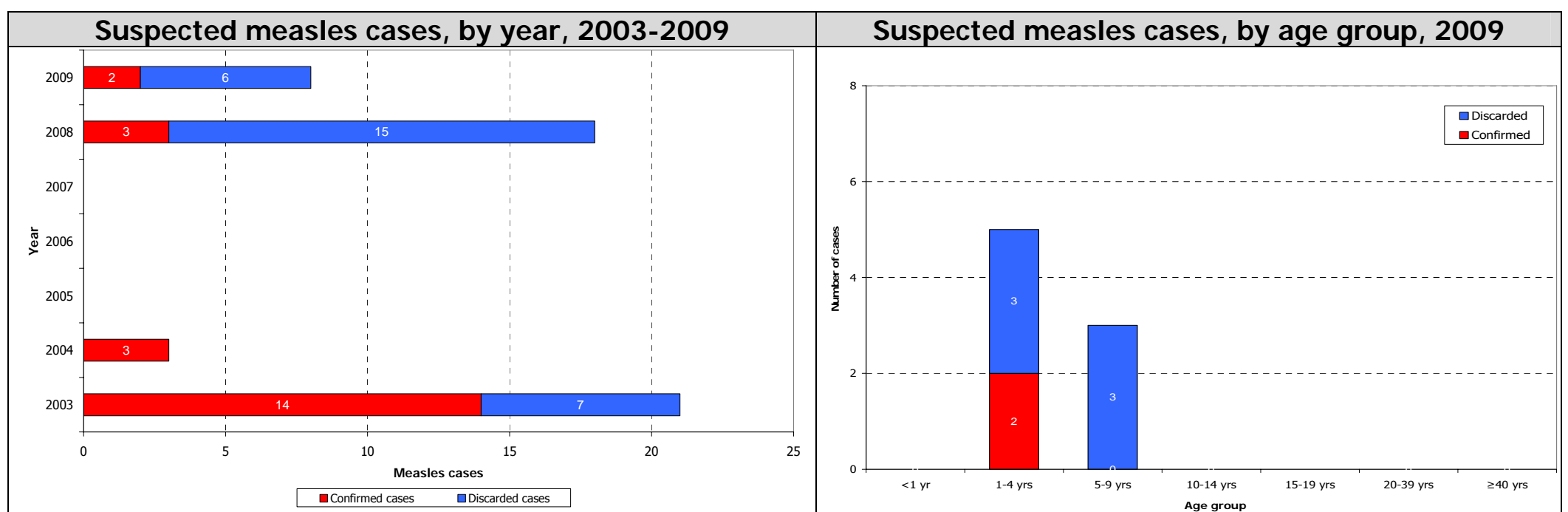
# Brunei Darussalam, 2009

Plans/Review	Available	Period covered	Safe immunization	
Multi-year plan (MYP)	No		% of districts using AD syringes	100%
Annual workplan for immunization activities	No		System to monitor AEFI	No
Includes measles elimination activities			Number of AEFI	No data
Includes Hepatitis B control activities			Disposal methods	Incineration
Updated wild poliovirus importation and cVDPV response plan	No			
Injection safety review	Yes			

Measles elimination				
Confirmed measles case rate		5	Year of MCV1 introduction	No data
Discarded measles case rate	(Target: $\geq 2/100,000$ pop)	1.5	Year of MCV2 introduction	1997
% suspected cases w/ adeq. specimens	(Target: at least 80%)	75%	Year and target pop of last SIA	1998; Y5-12
Does surv. system assess measles importation? (No. of imp. cases)		Yes (2)	No. vaccinated (coverage achieved)	96%

Rubella				
Rubella containing vaccine in NIP		Yes	Number of rubella cases (IgM+)	No data
Is rubella notifiable?		Yes	Surveillance system for CRS	No

From measles case-based surveillance data



Operational indicators for Hepatitis B control program			
Year HepB vaccine first used in NIP	1984	Systems to monitor HepB vaccine birth dose	No data
Year HepB vaccine expanded nationwide	1984	Systems to deliver HepB vaccine birth dose	No data
HepB vaccine birth dose in schedule	Yes	Estimated chronic infection rate in under 5 years old	No data
HepB vaccine birth dose coverage within 24 hours	100%	No. of districts with >10% difference between DTP3-HepB3	No data

Disease	Type of surveillance system	Year surveillance start	Number of facilities under sentinel surveillance	Number of patients positive
Rotavirus diarrhea	No data	No data	No data	No data
Bacterial meningitis	No data	No data	No data	0
Bacterial pneumonia	No data	No data	No data	No data
Meningoencephalitis	No data	No data	No data	No data

**Note:** Unless otherwise specified, data are from WHO/UNICEF Joint Reporting Form for Immunization.