



# Republic of Korea, 2009

Population	
Total population*	48 332 822
Births	465 892
NIP target	No data

\* United Nations, Department of Economic and Social Affairs, Population Division (2009). World Population Prospects: The 2008 Revision, CD-ROM Edition.

Finance	
GDP* per capita	US\$ 20,045
Line item in budget for vaccines?	Yes
Line item in budget for injection supplies?	Yes
% of NIP costs government funded	48%
% of NIP vaccine government funded	48%

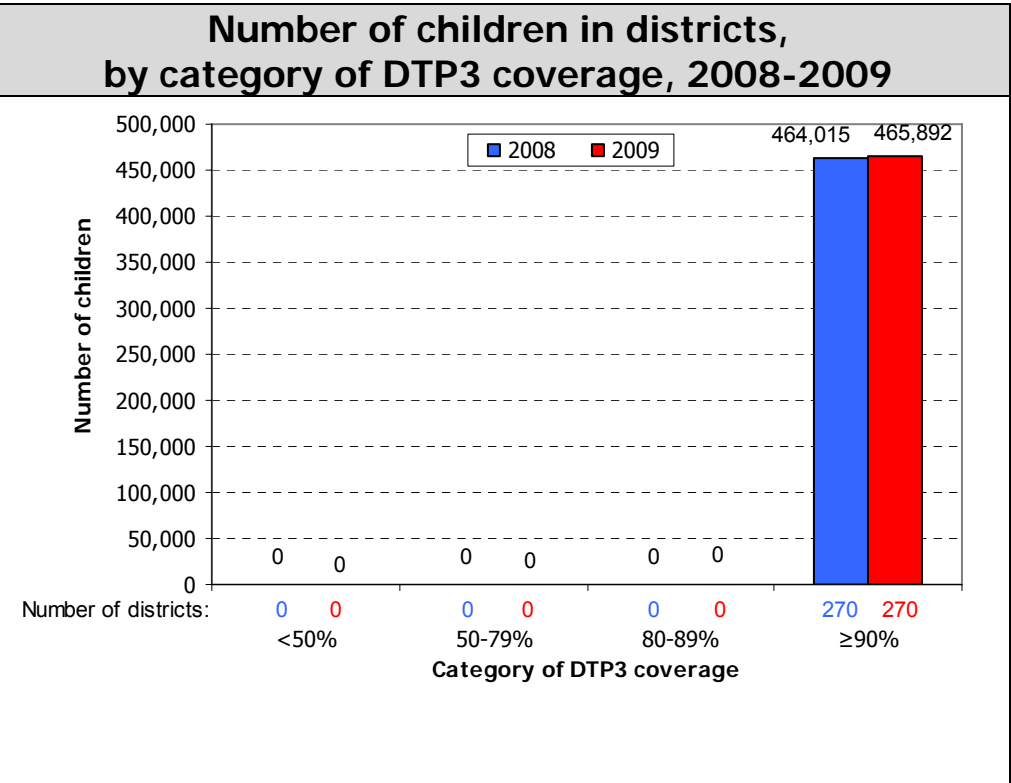
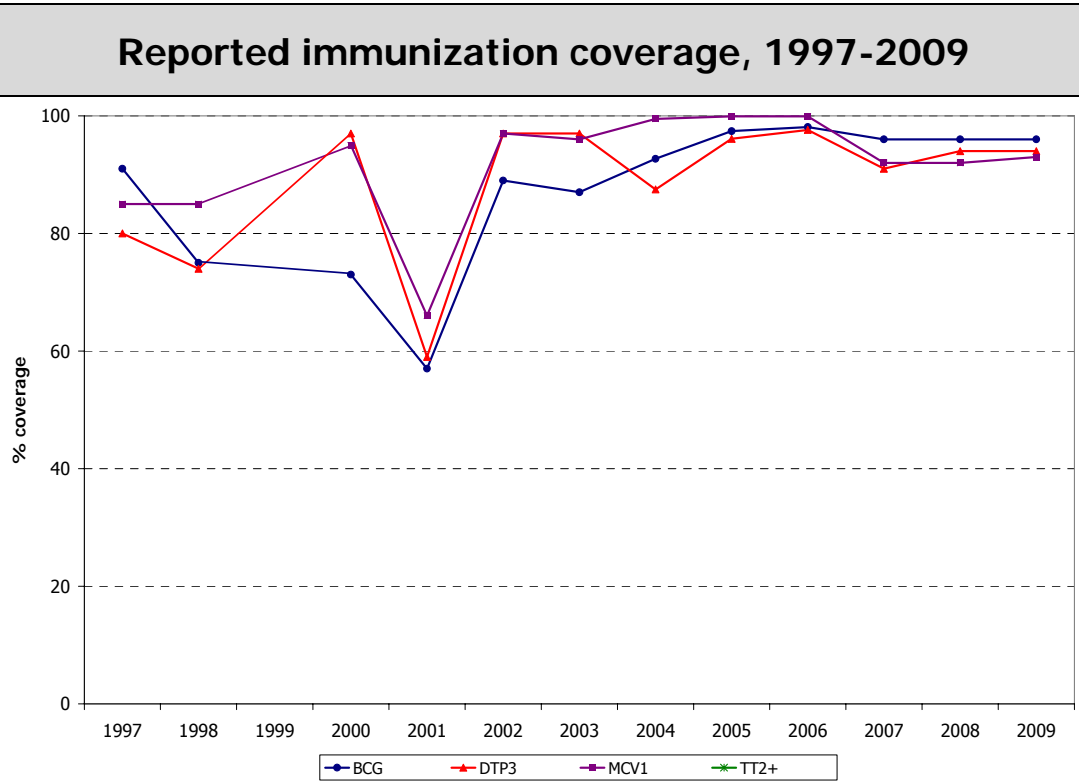
\* Western Pacific Country Health Information Profiles, 2009 Revision

NIP priority needs	
1. Hepatitis B control	
2. Expansion of National Immunization Program	
3. Expansion of Immunization registration program in private sector	

Delivery of immunization services	
% of population served by outreach	0%
No. (%) of districts with DTP3 coverage < 50%	0 (0%)
No. (%) of districts with DTP3 coverage > 90%	270 (100%)
No. (%) of districts with MCV1 coverage < 80%	0 (0%)
No. (%) of districts with MCV1 coverage > 90%	270 (100%)
No. (%) of districts w/ DTP drop-out > 10%	No data
No. (%) of districts w/ DTP1 – MCV1 drop-out >10%	No data



Immunization schedule			
BCG	B-4W	Typhoid	3-4 time (oral) 1 time (Vi)
DTP (acellular)	M2; M4; M6; M15-18; Y4-6	Varicella	M12-15
HepB	B; M1; M6	Influenza	High risk group
IPV	M2; M4; M6; Y4-6	JE MBDI	M12-24; 1-2W after 1st dose; 1Y after 2nd dose; Y6; Y12
MMR	M12-15; Y4-6		
Td	Y11-12		



Reported cases												
Year	AFP		Measles		Neonatal tetanus		Total tetanus		Diphtheria		Pertussis	
	Non-polio AFP rate	% adequate specimens	Cases	IR	Cases	IR	Cases	IR	Cases	IR	Cases	IR
2000	0.3	69%	32 647	697.9			16	0.0			28	0.1
2001	0.2	96%	23 061	490.2			8	0.0	0	0.0	9	0.0
2002	0.2	95%	50	1.1			4	0.0			21	0.0
2003	0.2	78%	33	0.7			8	0.0	0	0.0	5	0.0
2004	0.4	97%	16	0.3			11	0.0	0	0.0	6	0.0
2005	0.2	100%	6	0.1			11	0.0	0	0.0	10	0.0
2006	0.4	85%	25	0.5	0	0.0	10	0.0	0	0.0	17	0.0
2007	0.3	81%	180	3.7							14	0.0
2008	0.1	100%	1	0.0			14	0.0	0	0.0	7	0.0
2009	0.2	85%	11	0.2			17	0.0	0	0.0	42	0.1

Non-polio AFP rate = incidence per 100 000 under 15 years; % adequate specimens = % of AFP cases with 2 specimens within 14 days of paralysis onset.

IR = incidence rate: for measles, per 1 000 000 population; for neonatal tetanus, per 1000 live births; for all others, per 100 000 population. Total tetanus includes neonatal tetanus cases.

Population source: United Nations, Department of Economic and Social Affairs, Population Division. World Population Prospects.



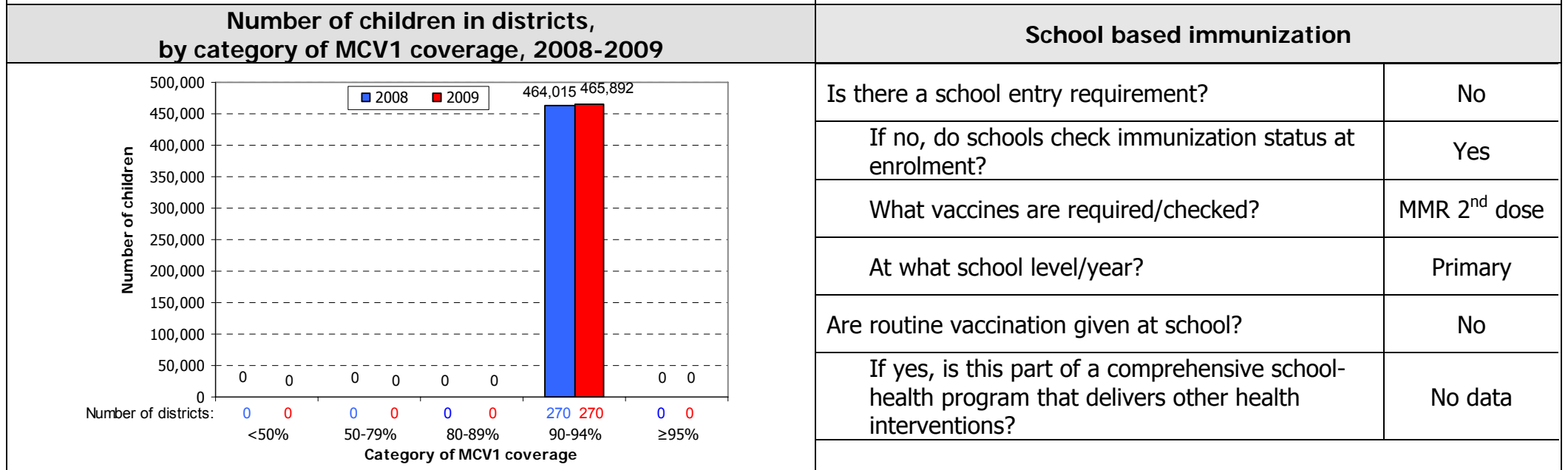
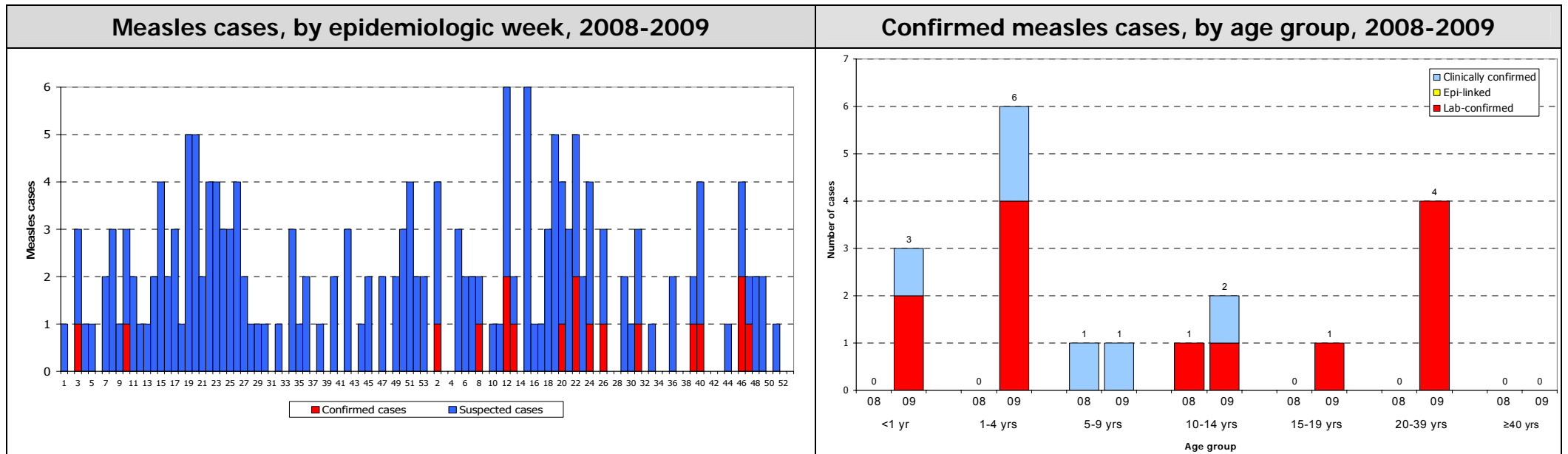
# Republic of Korea, 2009

Plans/Review	Available	Period covered	Safe immunization	
Multi-year plan (MYP)	Yes	2008-2012	% of districts using AD syringes	0%
Annual workplan for immunization activities	Yes		System to monitor AEFI	Yes
Includes measles elimination activities	Yes		Number of AEFI	2384
Includes Hepatitis B control activities	Yes		Disposal methods	Incineration
Updated wild poliovirus importation and cVDPV response plan	Yes	From 1998		
Injection safety review	Yes			

Measles elimination				
Confirmed measles case rate		0.4	Year of MCV1 introduction	1985
Discarded measles case rate	(Target: $\geq 2/100,000$ pop)	0.1	Year of MCV2 introduction	2000
% suspected cases w/ adeq. specimens	(Target: at least 80%)	59.7%	Year and target pop of last SIA	2009; Y7
Does surv. system assess measles importation? (No. of imp. cases)	Yes (2)		No. vaccinated (coverage achieved)	466 432 (100%)

Rubella				
Rubella containing vaccine in NIP		No	Number of rubella cases (IgM+)	9
Is rubella notifiable?		No	Surveillance system for CRS	No

From measles case-based surveillance data



Operational indicators for Hepatitis B control program			
Year HepB vaccine first used in NIP	1983	Systems to monitor HepB vaccine birth dose	Hospitals, HCs
Year HepB vaccine expanded nationwide	1995	Systems to deliver HepB vaccine birth dose	Hospitals, HCs
HepB vaccine birth dose in schedule	Yes	Estimated chronic infection rate in under 5 years old	<1%
HepB vaccine birth dose coverage within 24 hours	95%	No. of districts with >10% difference between DTP3-HepB3	No data

Disease	Type of surveillance system	Year surveillance start	Number of facilities under sentinel surveillance	Number of patients positive
Rotavirus diarrhea	No data	No data	No data	No data
Bacterial meningitis	No data	No data	No data	No data
Bacterial pneumonia	No data	No data	No data	No data
Meningoencephalitis	No data	No data	No data	No data

**Note:** Unless otherwise specified, data are from WHO/UNICEF Joint Reporting Form for Immunization.