



# Philippines, 2009

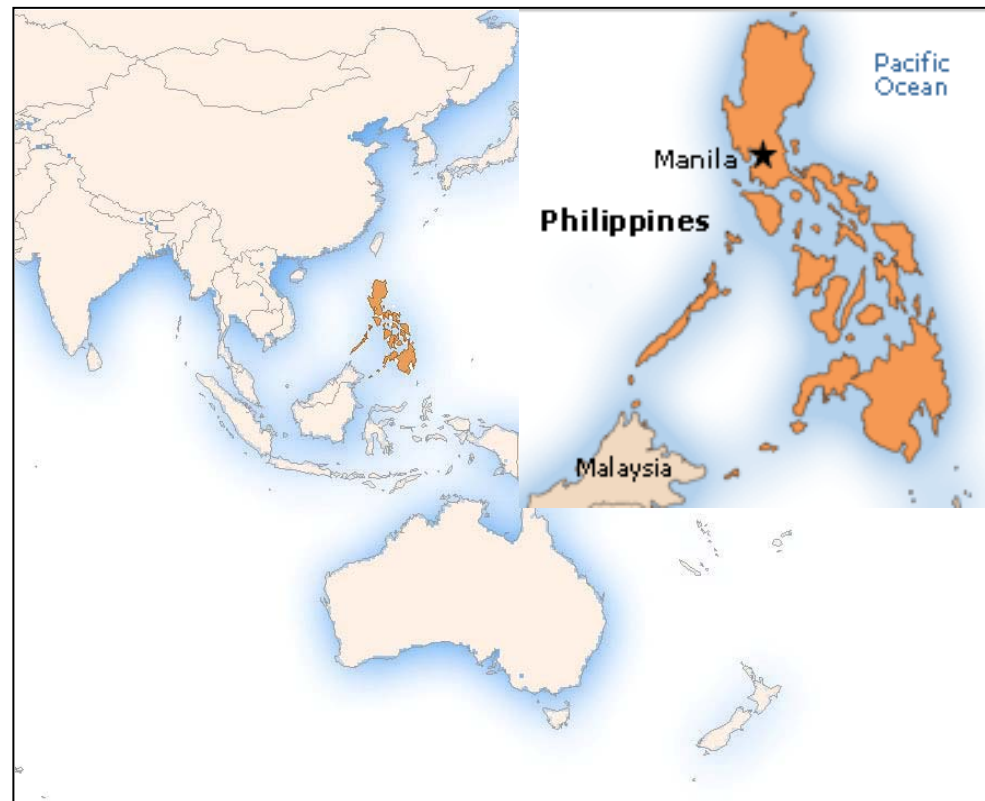
Population	
Total population*	91 983 099
Births	2 490 118
NIP target	2 427 865

\*United Nations, Population Division. World Population Prospects - the 2008 revision. New York, 2009.

Finance	
GDP* per capita	US\$ 1638.33
Line item in budget for vaccines?	Yes
Line item in budget for injection supplies?	No
% of NIP costs government funded	100%
% of NIP vaccine government funded	100%

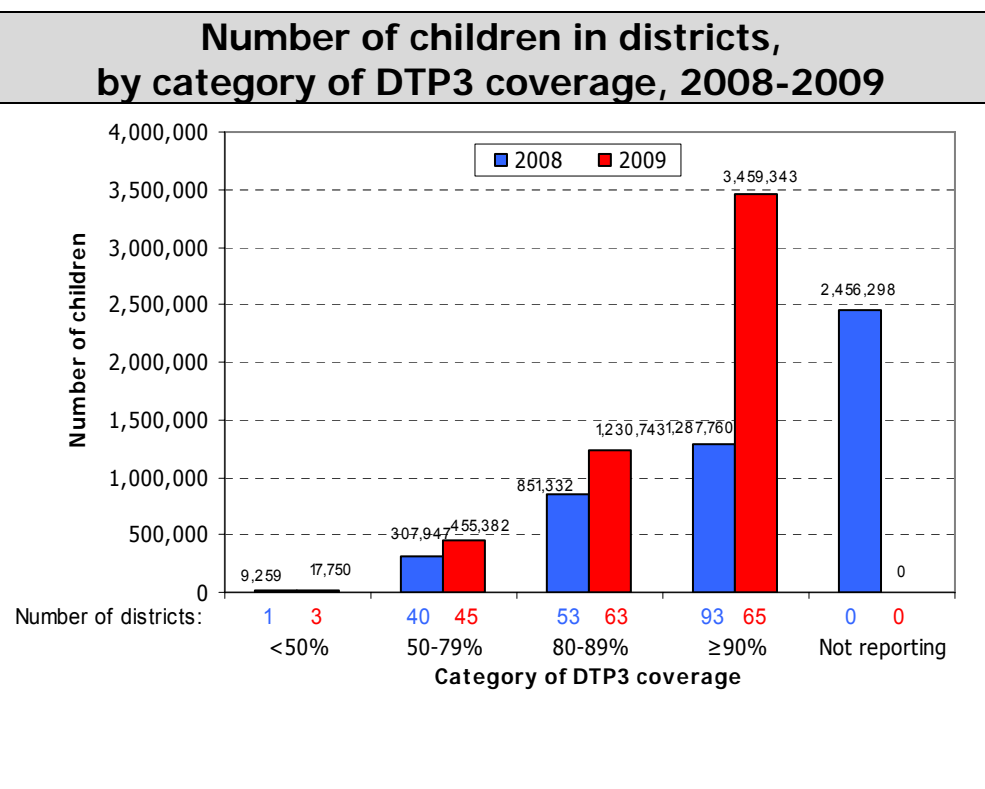
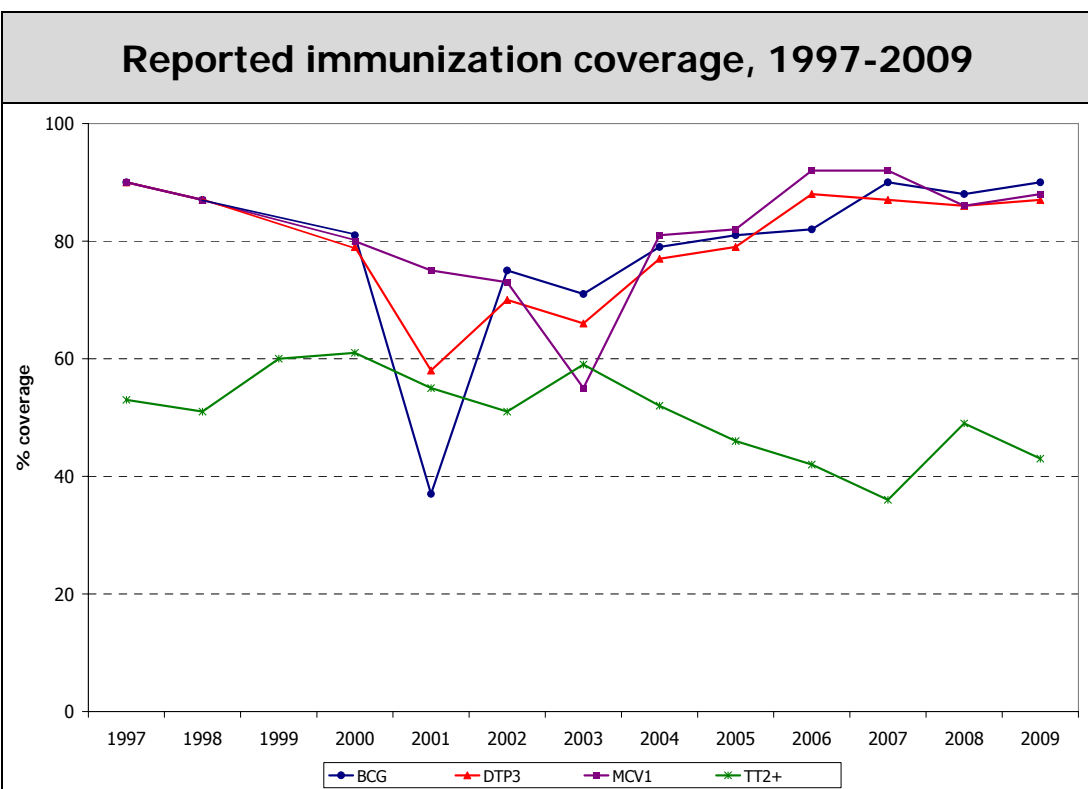
\*Western Pacific Country Health Information Profiles, 2008 Revision

NIP priority needs	
1- Follow-up of defaulters and school immunization screening	
2- Conduct of Phasing SIA for measles	
3- Tetanus Toxoid (TT) SIA in the identified nine (9) priority areas.	



Delivery of immunization services	
% of population served by outreach	5%
No. (%) of districts with DTP3 coverage < 50%	3 (1.70%)
No. (%) of districts with DTP3 coverage > 90%	65 (37.0%)
No. (%) of districts with MCV1 coverage < 80%	41 (23.20%)
No. (%) of districts with MCV1 coverage > 90%	77 (43.50%)
No. (%) of districts w/ DTP drop-out > 10%	19 (10.8%)
No. (%) of districts w/ DTP1 – MCV1 drop-out >10%	22 (1%)

Immunization schedule	
BCG	B
DTP	W6; W10; W14
HepB	B; W6; W14
OPV	W6; W10; W14
TT to PW	1st contact; +M1; +M6; +Y1; +Y1
Vit A	M6; M12; M18; M24; M30; M36
MMR	M12



Reported cases												
Year	AFP		Measles		Neonatal tetanus		Total tetanus		Diphtheria		Pertussis	
	Non-polio AFP rate	% adequate specimens	Cases	IR	Cases	IR	Cases	IR	Cases	IR	Cases	IR
2000	1.6	78%	7120	93.4	415	0.2	1135	1.5	88	0.1	23	0.0
2001	1.1*	79%	7360	94.6	407	0.2	1479	1.9	73	0.1	16	0.0
2002	1.6	87%	7003	88.1	214	0.1	1165	1.5	62	0.1	8	0.0
2003	1.5	90%	10 511	129.5	239	0.1	1151	1.4	88	0.1	9	0.0
2004	1.1	83%	3025	36.5	250	0.1	1293	1.6	89	0.1	10	0.0
2005	1.1	80%	118	1.4	177	0.1	922	1.1	118	0.1	20	0.0
2006	1.4	83%	9	0.1	161	0.1	1232	1.4	47	0.1	41	0.0
2007	1.5	77%	530	6.0	121	0.1	1261	1.4	39	0.0	17	0.0
2008	1.5	73%	341	3.8	132	0.1	813	0.9	65	0.1	46	0.1
2009	1.8	68%	1469	16.0	172	0.1	1022	1.1	118	0.1	2	0.0

Non-polio AFP rate = incidence per 100 000 under 15 years; % adequate specimens = % of AFP cases with 2 specimens within 14 days of paralysis onset.

IR = incidence rate: for measles, per 1 000 000 population; for neonatal tetanus, per 1000 live births; for all others, per 100 000 population. Total tetanus includes neonatal tetanus cases.

Population source: United Nations, Department of Economic and Social Affairs, Population Division. World Population Prospects.

\* includes 3 cases with circulating vaccine-derived poliovirus (cVDPV) confirmed by lab



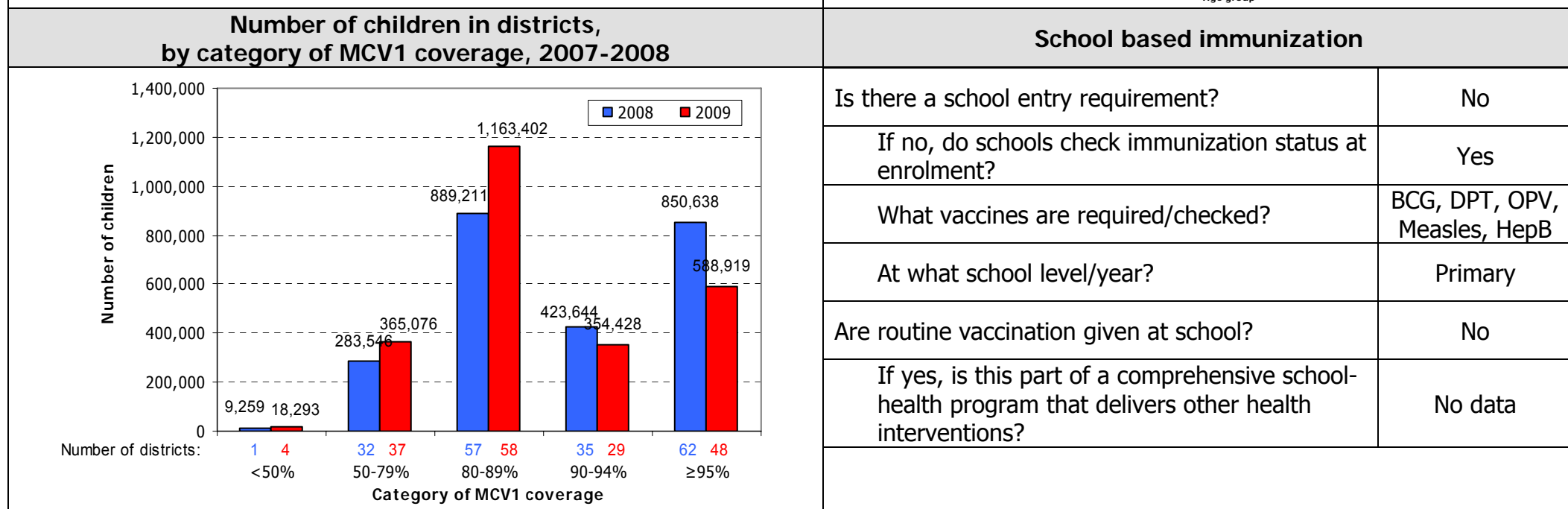
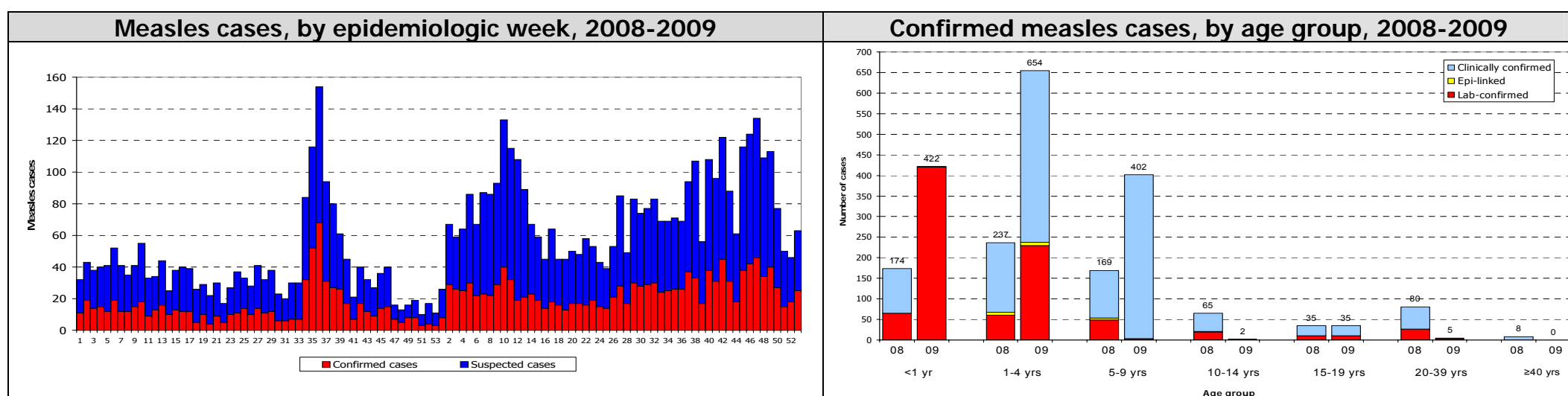
# Philippines, 2009

Plans/Review	Available	Period covered	Safe immunization	
Multi-year plan (MYP)	No		% of districts using AD syringes	100%
Annual workplan for immunization activities	Yes		System to monitor AEFI	Yes
Includes measles elimination activities	Yes		Number of AEFI	No data
Includes Hepatitis B control activities	Yes		Disposal methods	Burial
Updated wild poliovirus importation and cVDPV response plan	Yes			
Injection safety review	Yes			

Measles elimination				
Confirmed measles case rate		16.1	Year of MCV1 introduction	1982
Discarded measles case rate	(Target: $\geq 2/100,000$ pop)	1.6	Year of MCV2 introduction	No data
% suspected cases w/ adeq. specimens	(Target: at least 80%)	56.5%	Year and target pop of last SIA	2009; M15-23
Does surv. system assess measles importation? (No. of imp. cases)		Yes	No. vaccinated (coverage achieved)	459 682 (58%)

Rubella				
Rubella containing vaccine in NIP		Yes	Number of rubella cases (IgM+)	310
Is rubella notifiable ?		No	Surveillance system for CRS	No

From measles case-based surveillance data



Operational indicators for Hepatitis B control program			
Year HepB vaccine first used in NIP	1991	Systems to monitor HepB vaccine birth dose	Hospitals, HCs, Home
Year HepB vaccine expanded nationwide	1992	Systems to deliver HepB vaccine birth dose	Hospitals, HCs, Home
HepB vaccine birth dose in schedule	Yes	Estimated chronic infection rate in under 5 years old	No data
HepB vaccine birth dose coverage within 24 hours	21%	No. of districts with >10% difference between DTP3-HepB3	14

Disease	Type of surveillance system	Year surveillance start	Number of facilities under sentinel surveillance	Number of patients positive
Rotavirus diarrhea	No data	No data	No data	No data
Bacterial meningitis	Sentinel	No data	No data	No data
Bacterial pneumonia	No data	No data	No data	No data
Meningoencephalitis	Sentinel	2008	5	5

**Note:** Unless otherwise specified, data are from WHO/UNICEF Joint Reporting Form for Immunization.