



# Cambodia, 2009

Population	
Total population*	14 805 359
Births	361 780
NIP target	359 071

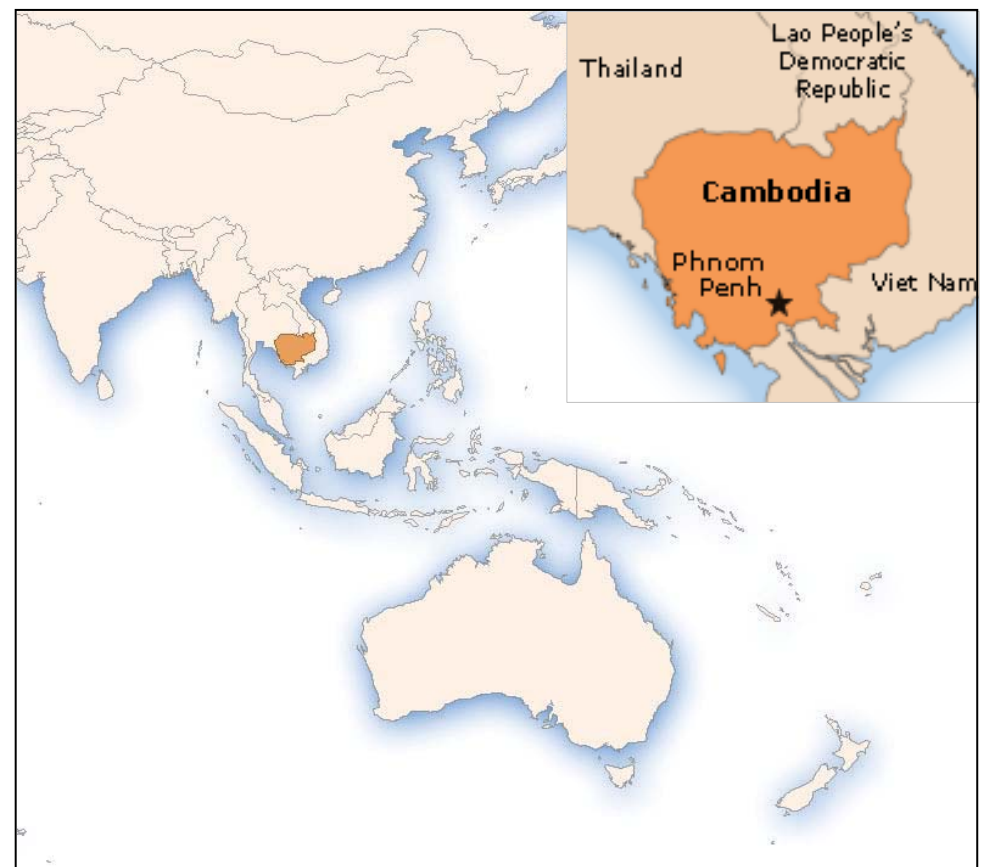
\* United Nations, Department of Economic and Social Affairs, Population Division (2009). World Population Prospects: The 2008 Revision, CD-ROM Edition.

Finance	
GDP* per capita (2008)	\$ 635
Line item in budget for vaccines?	Yes
Line item in budget for injection supplies?	Yes
% of NIP costs government funded	No data
% of NIP vaccine government funded	22%

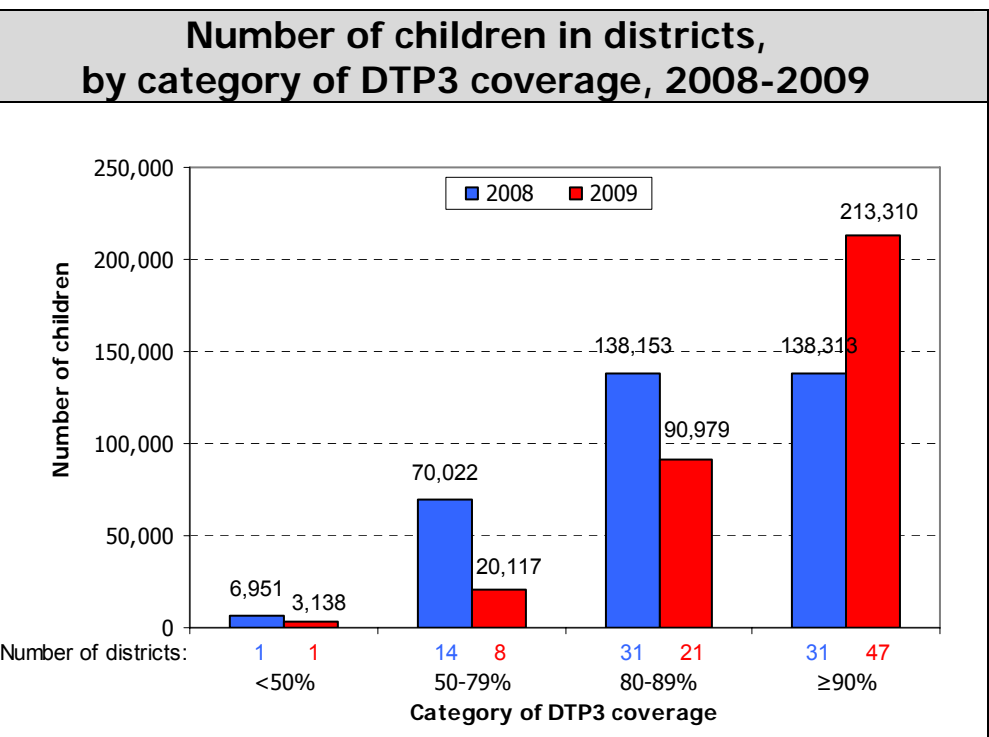
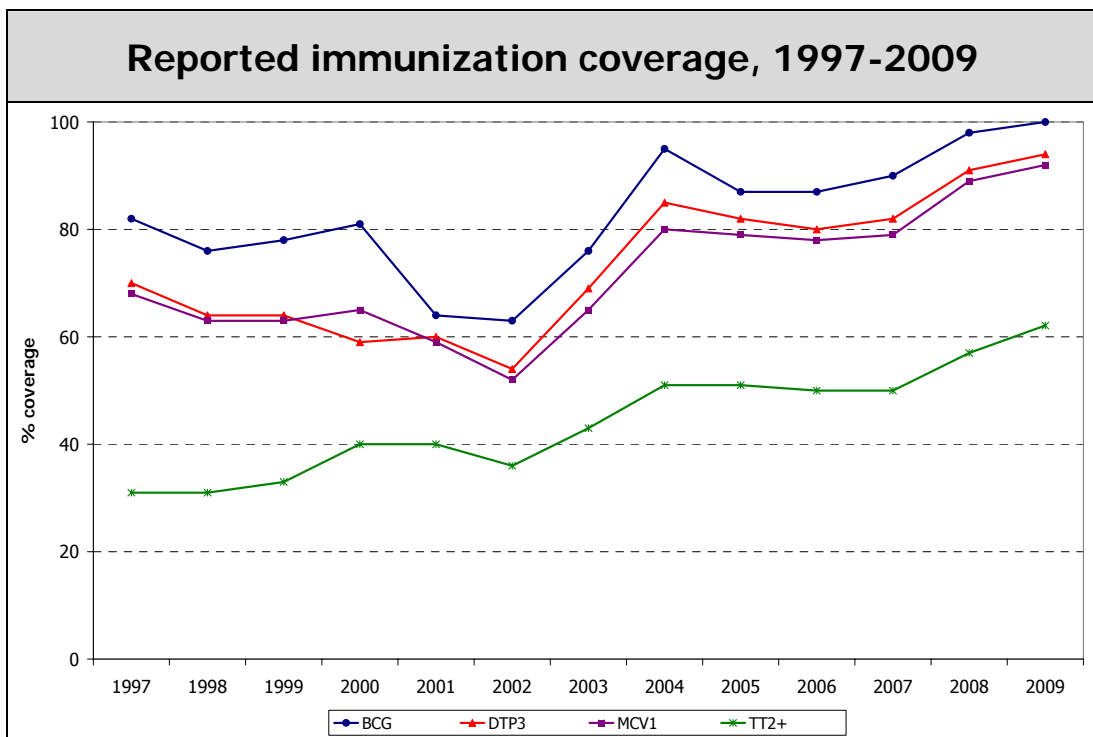
\* Western Pacific Country Health Information Profiles, 2009 Revision

NIP priority needs	
1. Introduction of pentavalent vaccine, JE vaccine	
2. Measles SIA, MNTE	
3. HepB serosurvey, EPI review, coverage survey, EPI policy revision, need to refine target population, orphanage immunization strategy	

Delivery of immunization services	
% of population served by outreach	61%
No. (%) of districts with DTP3 coverage < 50%	1 (1%)
No. (%) of districts with DTP3 coverage ≥ 90%	47 (61%)
No. (%) of districts with MCV1 coverage < 80%	13 (17%)
No. (%) of districts with MCV1 coverage ≥ 90%	38 (49%)
No. (%) of districts w/ DTP drop-out > 10%	8 (10%)
No. (%) of districts w/ DTP1 – MCV1 drop-out >10%	23 (30%)



Immunization schedule	
BCG	B (Birth)
DTPHepB	6w; 10w; 14w
HepB	1-7d
Measles	9-11m
OPV	6w; 10w; 14w
TT to PW	1 <sup>st</sup> contact; +1m; +6m; +1y; +1y
VitA	6-59m



Reported cases												
Year	AFP		Measles		Neonatal tetanus		Total tetanus		Diphtheria		Pertussis	
	Non-polio AFP rate	% adequate specimens	Cases	IR	Cases	IR	Cases	IR	Cases	IR	Cases	IR
2000	3.6	72%	12 327	964.6	295	0.8	169	1.3	0	0.0	2068	16.2
2001	2.6	75%	3761	288.8	165	0.4	913	7.0	0	0.0	4714	36.2
2002	3.3	66%	1361	102.6	169	0.5	966	7.3	0	0.0	320	2.4
2003	2.9	66%	653	48.4	238	0.6	796	5.9	3	0.0	315	2.3
2004	1.6	77%	352	25.7	146	0.4	1041	7.6	4	0.0	66	0.5
2005	2.1*	76%	264	18.9	68	0.2	0	0.0	0	0.0	462	3.3
2006	2.1*	79%	188	13.2	69	0.2			0	0.0	474	3.3
2007	1.8	87%	394	27.3	50	0.1	242	1.7	5	0.0	561	3.9
2008	1.4	83%	4211	286.5	34	0.1	324	2.2	7	0.0	1212	8.2
2009	1.3	79%	4779	322.8	27	0.1			3	0.0	513	3.5

Non-polio AFP rate = incidence per 100 000 under 15 years; % adequate specimens = % of AFP cases with 2 specimens within 14 days of paralysis onset.

IR = incidence rate: for measles, per 1 000 000 population; for neonatal tetanus, per 1000 live births; for all others, per 100 000 population. Total tetanus includes neonatal tetanus cases.

Population source: United Nations, Department of Economic and Social Affairs, Population Division. World Population Prospects.

\* includes 1 case with circulating vaccine-derived poliovirus (cVDPV) confirmed by lab



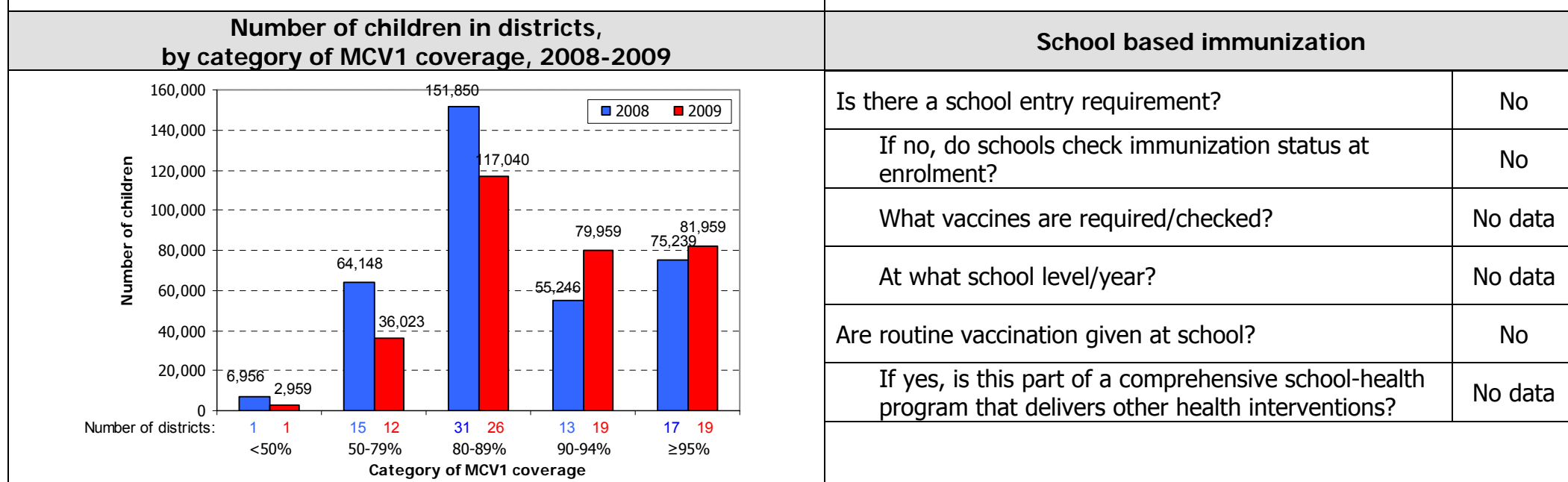
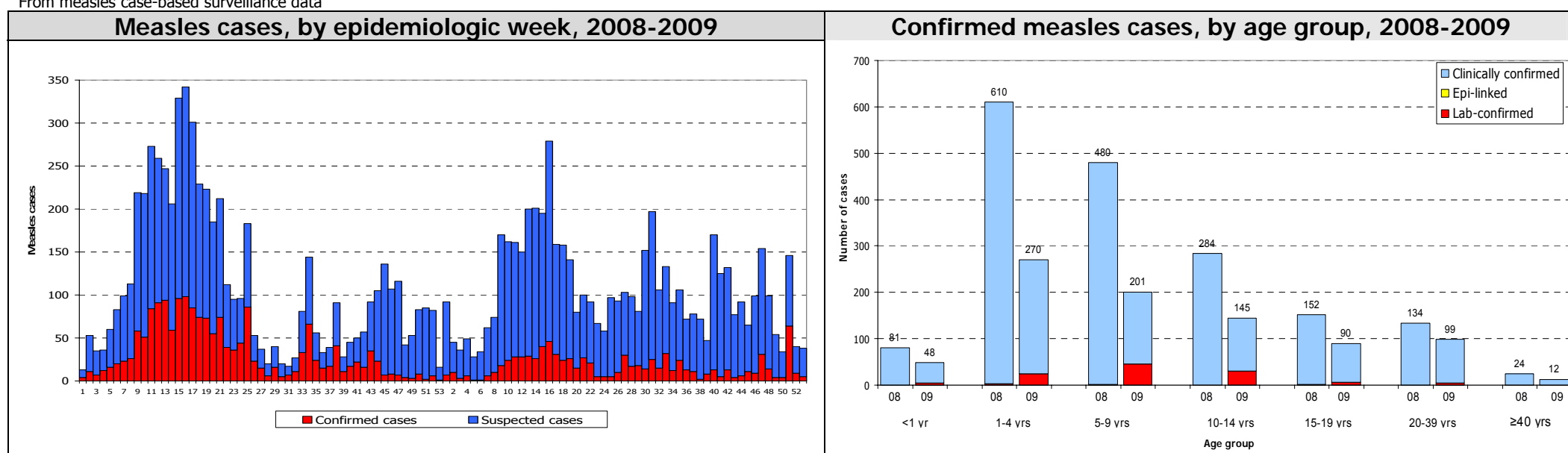
# Cambodia, 2009

Plans/Review	Available	Period covered	Safe immunization	
Multi-year plan (MYP)	Yes	2008-2015	% of districts using AD syringes	100%
Annual workplan for immunization activities	Yes		System to monitor AEFI	Yes
Includes measles elimination activities	Yes		Number of AEFI	11
Includes Hepatitis B control activities	Yes		Disposal methods	Incineration
Updated wild poliovirus importation and cVDPV response plan	No			
Injection safety review	No			

Measles elimination				
Confirmed measles case rate		58.4	Year of MCV1 introduction	1986
Discarded measles case rate	(Target: $\geq 2/100,000$ pop)	26.4	Year of MCV2 introduction	No data
% suspected cases w/ adeq. specimens	(Target: at least 80%)	82.9%	Year and target pop of last SIA	No data
Does surv. system assess measles importation? (No. of imp. cases)	No		No. vaccinated (coverage achieved)	No data

Rubella				
Rubella-containing vaccine in NIP	No		Number of rubella cases (IgM+)	516
Is rubella notifiable?	No		Surveillance system for CRS	No

From measles case-based surveillance data



Operational indicators for Hepatitis B control program			
Year HepB vaccine first used in NIP	2001	Systems to monitor HepB vaccine birth dose	Hospitals, HCs
Year HepB vaccine expanded nationwide	2005	Systems to deliver HepB vaccine birth dose	Hospitals, HCs
HepB vaccine birth dose in schedule	Yes	Estimated chronic infection rate in children under 5 yrs old	3.4
HepB vaccine birth dose coverage within 24 hours	55%	No. of districts with >10% difference between DTP3-HepB3	No data

Disease	Type of surveillance system	Year surveillance started	Number of facilities under sentinel surveillance	Number of patients positive
Rotavirus diarrhea	Sentinel	No data	1	80
Bacterial meningitis	Sentinel	No data	6	No data
Japanese encephalitis	Sentinel	No data	6	23
Bacterial pneumonia	No data	No data	0	No data

**Note:** Unless otherwise specified, data are from WHO/UNICEF Joint Reporting Form for Immunization.